

# MROC (ALAJUELA) JUAN SANTAMARIA INTL (13-2) VOR-A

2 FEB 01



ATIS 127.3  
COCO Control (R) 119.6  
\*COCO Approach (R) 120.5  
COCO Tower 118.6  
Ground 121.3

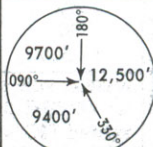
VOR TIO 115.7

Final Apch Crs 067°

No FAF

MDA(H) Refer to Minimums

Apt Elev 3048'



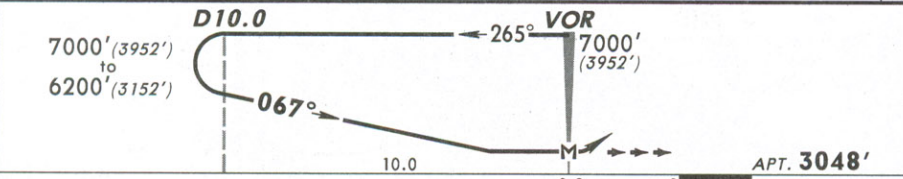
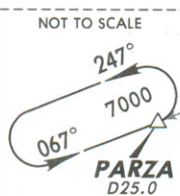
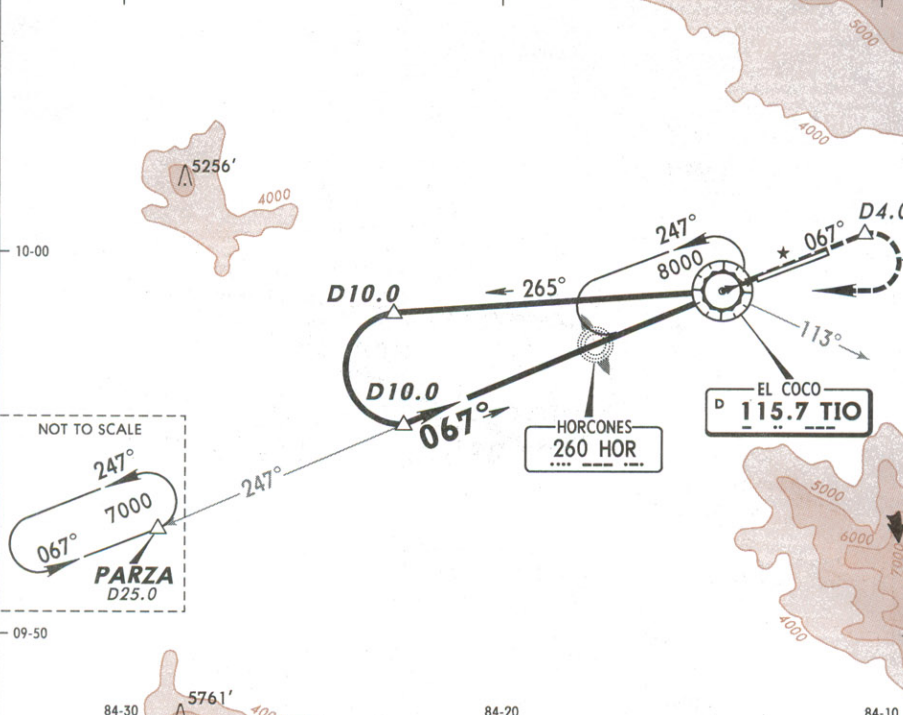
**MISSED APCH:** Climb outbound on TIO VOR R-067 to D4.0 or 5000', then turn RIGHT continue climbing to TIO VOR crossing at 7000'. Do not exceed TIO VOR R-113. Maintain in the holding pattern.

Alt Set: hPa Apt Elev: 107 hPa Trans level: By ATC Trans alt: 19000'(15952')  
1. Do not exceed 200 kts in any phase of the procedure.

MSA TIO VOR

BRIEFING STRIP™

10  
10-00  
5  
0  
09-50  
5  
84-30  
84-20  
84-10



Lighting - Refer to Airport Chart	TIO on 115.7 R-067	D4.0 or 5000'
-----------------------------------	--------------------	---------------

STRAIGHT-IN LANDING		CIRCLE-TO-LAND	
A	NA	Max Kts	MDA(H)
B		100	
C		135	4400'(1352') - 3.6 km
D		180	4400'(1352') - 4.4 km

PANS OPS

CHANGES: Transition altitude.

© JEPPESEN SANDERSON, INC., 1999, 2001. ALL RIGHTS RESERVED.