

# MROC (ALAJUELA) JUAN SANTAMARIA INTL (11-1) 27 APR 01

## JEPPESEN SAN JOSE, COSTA RICA ILS DME Rwy 07

ATIS 127.3	COCO Control (R) 119.6	*COCO Approach (R) 120.5	COCO Tower 118.6	Ground 121.3
LOC IOCO <b>109.5</b>	Final Apch Crs <b>068°</b>	Minimum Alt D5.0 TIO <b>4800' (1838')</b>	ILS DA(H) <b>3162' (200')</b>	Apt Elev 3021' TDZE <b>2962'</b>

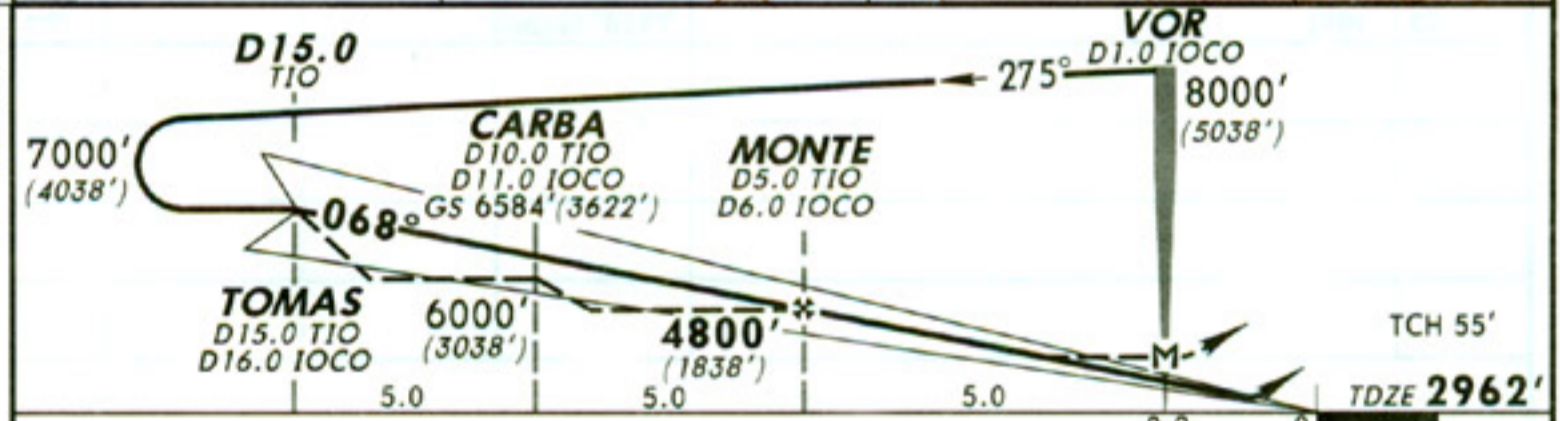
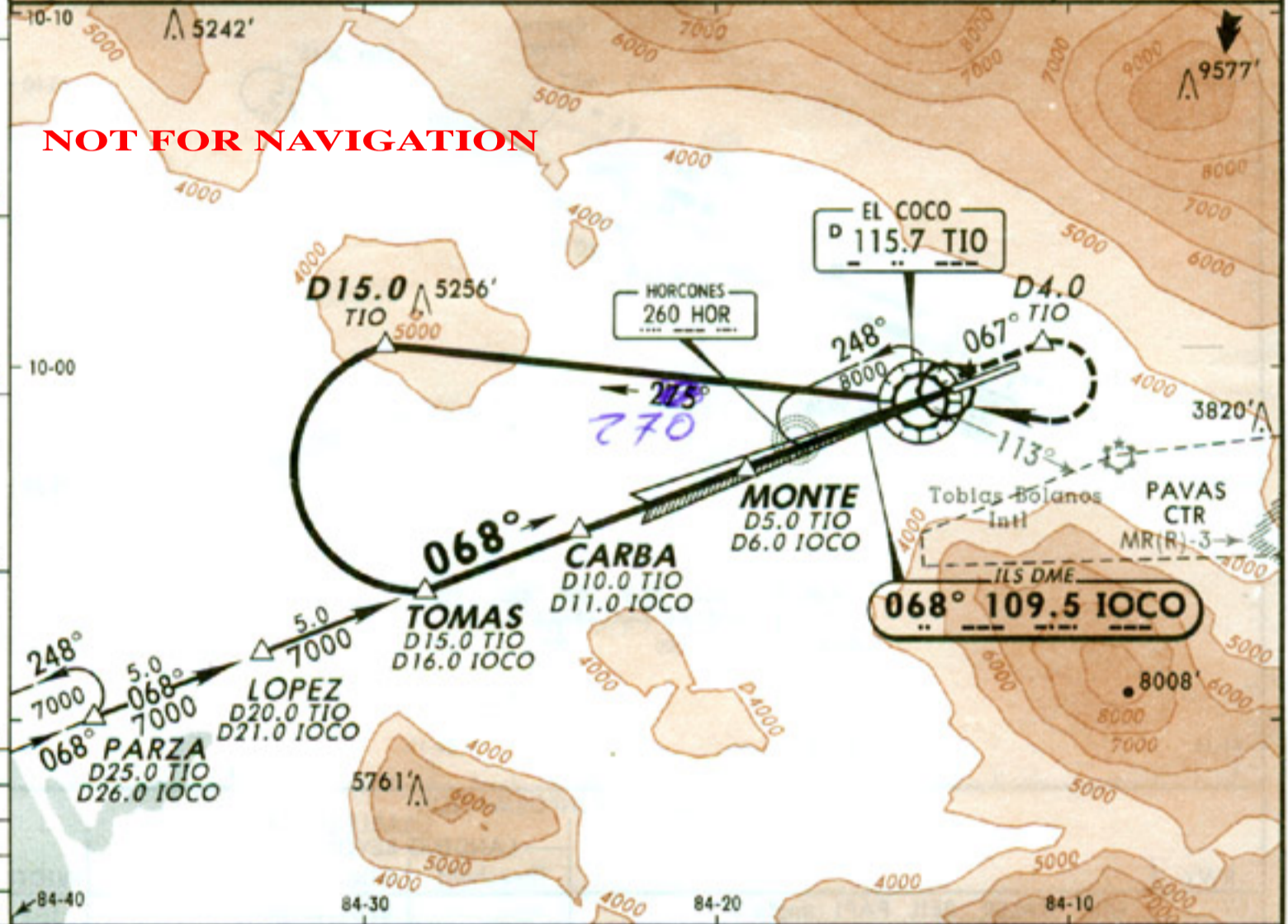
MSA TIO VOR

**MISSED APCH:** Climb outbound on TIO VOR R-067 to cross D4.0 TIO at or above 5000' then turn RIGHT climbing to TIO VOR crossing at or above 7000'. Do not exceed TIO VOR R-113. Obstacles in the missed approach area require a climb gradient of 300'/NM.

Alt Set: hPa TDZ Elev: 104 hPa Trans level: FL 200 Trans alt: 19000' (16038')

1. Do not exceed 200 kts in any phase of the procedure. 2. Do not enter Pavas CTR. High density general aviation traffic.

NOT FOR NAVIGATION



Gnd speed-Kts	70	90	100	120	140	160	MALSR REIL PAPI ↑ on TIO cross at 115.7 D4.0 R-067 TIO 5000'	
GS	3.00°	377	484	538	646	753		861
FAF to MAP	5.0	4:17	3:20	3:00	2:30	2:09		1:52

STRAIGHT-IN LANDING RWY 07				CEILING REQUIRED		CIRCLE-TO-LAND	
ILS DA(H) <b>3162' (200')</b>		LOC (GS out) MDA(H) <b>3360' (398')</b>					
FULL		RAIL or ALS out		RAIL out		ALS out	
CEILING-VISIBILITY							
A				A			
B	200' - 0.8 km	200' - 1.2 km		B			NA
C				C			
D				D			