

SAN SALVADOR, EL SALVADOR

# VOR/DME RWY 15

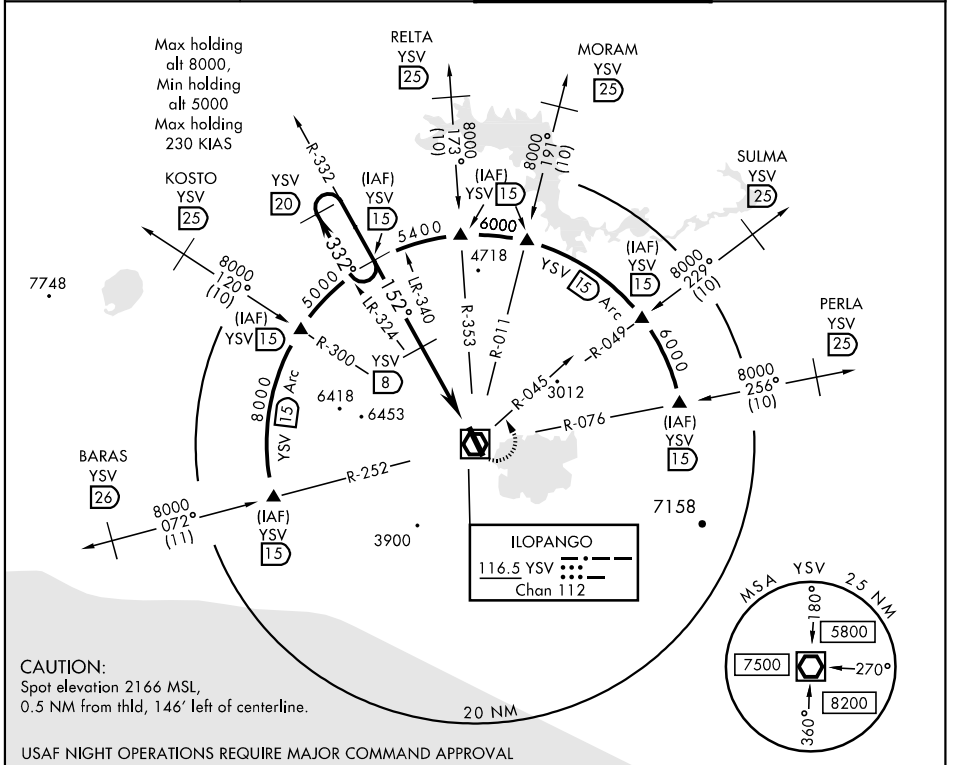
VOR/DME YSV <b>116.5</b> Chan <b>112</b>	APCH CRS <b>152°</b>	Rwy ldg TDZE <b>2014</b> Arprt Elev <b>2021</b>
--	-------------------------	---

[USAF] JAL-1086 (DGAC)

ILOPANGO INTL (MSSS)

**MISSED APPROACH:** Climb direct YSV VOR. Cross at or above 2800, turn left to intercept R-045 climbing to 6000, request ATC instructions.

EL SALVADOR APP CON <b>119.9</b>	ILOPANGO APP CON <b>119.5 (blw 7000)</b>	ILOPANGO TOWER * <b>118.3</b>	GND CON <b>121.9</b>
-------------------------------------	---	----------------------------------	-------------------------



13°42'N-89°07'W

ILOPANGO INTL (MSSS)

# VOR/DME RWY 15

**Effective 14 APR 2005 - 12 MAY 2005**