

GND CON
121.9
ILOPANGO TOWER *
118.3
ILOPANGO APP CON
119.5

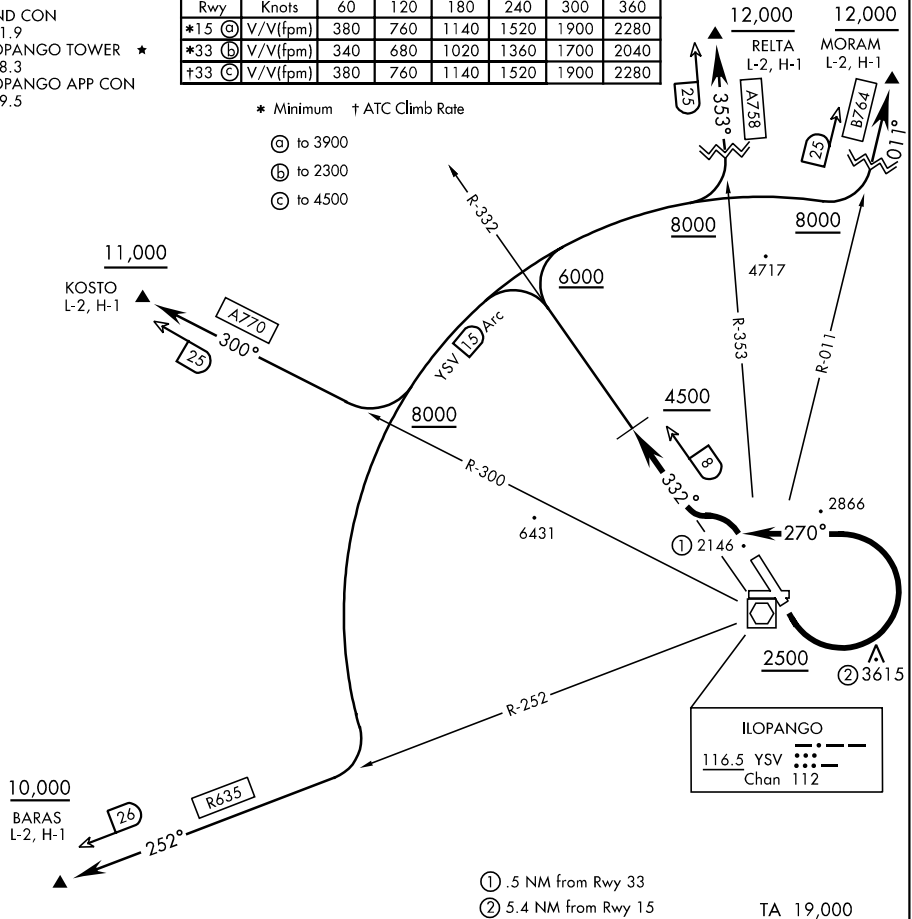
Rwy	Knots	60	120	180	240	300	360
*15 (a) V/V(fpm)	380	760	1140	1520	1900	2280	
*33 (b) V/V(fpm)	340	680	1020	1360	1700	2040	
+33 (c) V/V(fpm)	380	760	1140	1520	1900	2280	

* Minimum † ATC Climb Rate

Ⓐ to 3900

Ⓑ to 2300

Ⓒ to 4500



① .5 NM from Rwy 33

② 5.4 NM from Rwy 15

TA 19,000



DEPARTURE ROUTE DESCRIPTION

TAKE-OFF RWY 15: Climb straight ahead to 2500, turn left heading 270° to intercept YSV R-332 outbound, cross 8 DME at or above 4500. Thence...

TAKE-OFF RWY 33: Climb via YSV R-332, cross 8 DME at or above 4500. Thence...

BARAS TRANSITION: Continue climb to 6000 or above on YSV R-332, enter 15 DME Arc to the left, cross YSV R-300 at or above 8000, continue on 15 DME arc to intercept YSV R-252, proceed outbound and cross BARAS at or above 10,000.

KOSTO TRANSITION: Continue climb to 6000 or above on YSV R-332, enter 15 DME Arc to the left, to intercept YSV R-300 at or above 8000, proceed outbound and cross KOSTO at or above 11,000.

MORAM TRANSITION: Continue climbing to 6000 or above, enter the 15 DME Arc to the right, cross YSV R-353 at or above 8000, continue on 15 DME arc to intercept YSV R-011, proceed outbound and cross MORAM at or above 12,000.

RELTA TRANSITION: Continue climbing to 6000 or above, enter the 15 DME Arc to the right, intercept YSV R-353 outbound at or above 8000, cross RELTA at or above 12,000.