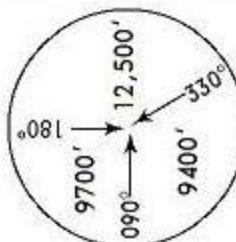


*COCO
Departure (R)
120.5

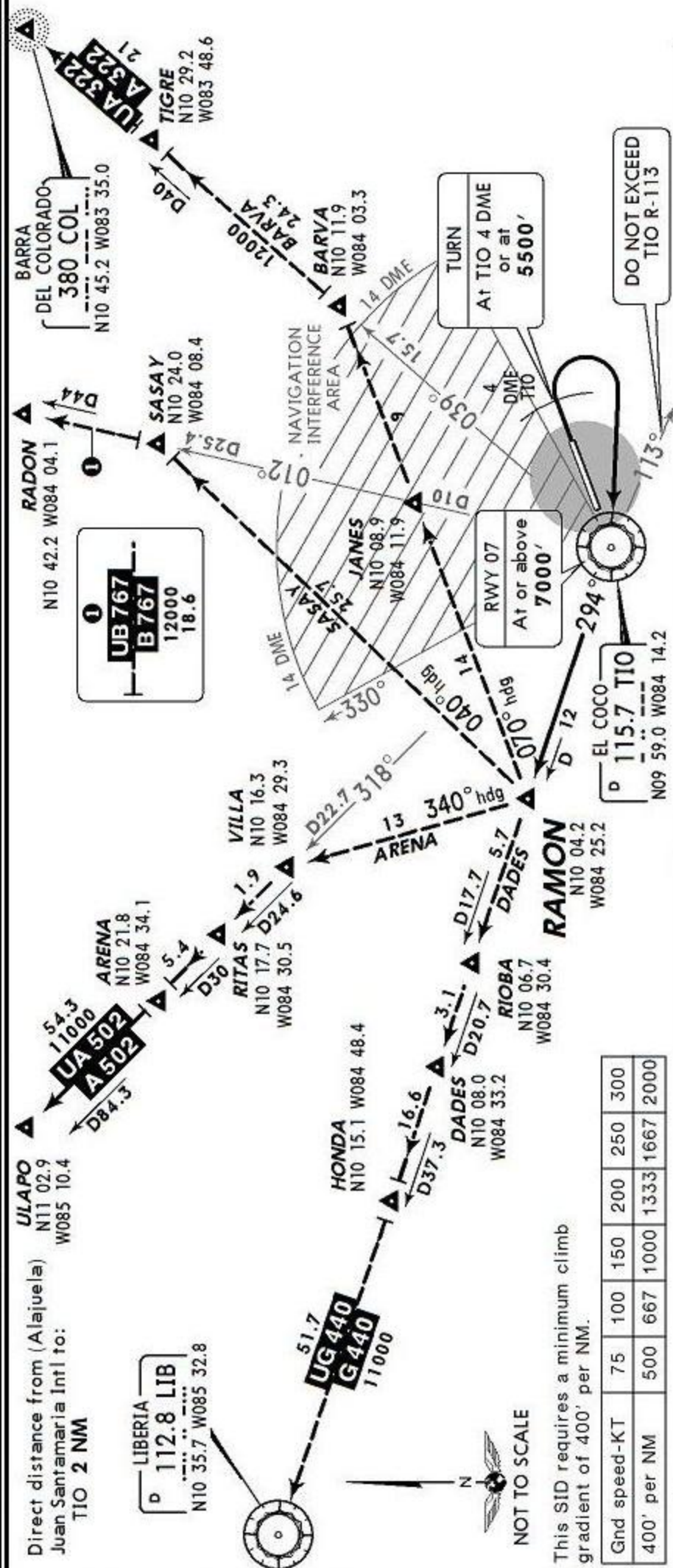
Apt Elev
3021'

Trans level: FL200 Trans alt: 19000'



MSA TIO VOR

RAMON 2 DEPARTURE



This SID requires a minimum climb gradient of 400' per NM.

Gnd speed-KT	75	100	150	200	250	300
400' per NM	500	667	1000	1333	1667	2000

INITIAL CLIMB

RWY 07 MAINTAIN runway heading with the maximum climb gradient possible to TIO 4 DME or 5500', then climbing RIGHT turn to TIO

RWY 25 Climb direct to TIO and continue with the departure procedure.

ROUTING

Climb on TIO R-294 with the maximum climb gradient possible to RAMON and continue on the assigned transition.

TRANSITIONS

- ARENA (A/UA-502)** Climb and MAINTAIN 9000'; cross RAMON level, turn RIGHT heading 340° to VILLA, on a 340° heading continue climb to 11000'. From VILLA turn LEFT heading 318° to ARENA. EXPECT higher after ARENA.
- BARVA (A/UA-322)** Climb and MAINTAIN 9000'; cross RAMON level, turn RIGHT heading 070° to BARVA, on a 070° heading continue climb to 12000'. From BARVA turn LEFT heading 039° to TIGRE. EXPECT higher after BARVA.
- DADES (G/UG-440)** Climb and MAINTAIN 11000'. Over RAMON continue on TIO R-294. EXPECT higher after DADES.
- SASAY (B/UB-767)** Climb and MAINTAIN 9000'; cross RAMON level, turn RIGHT heading 040° to SASAY, on a 040° heading continue climb to 12000'. From SASAY turn LEFT heading 012° to RADON. EXPECT higher after SASAY.