

MROC/SJO

JEPPesen

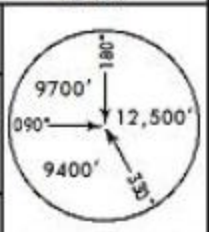
SAN JOSE, COSTA RICA

(ALAJUELA) JUAN SANTAMARIA INTL (18-1) 8 APR 05

RADAR ASR Rwy 07

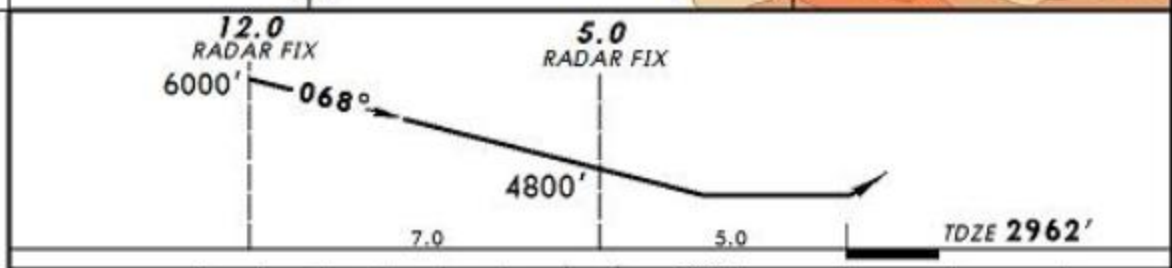
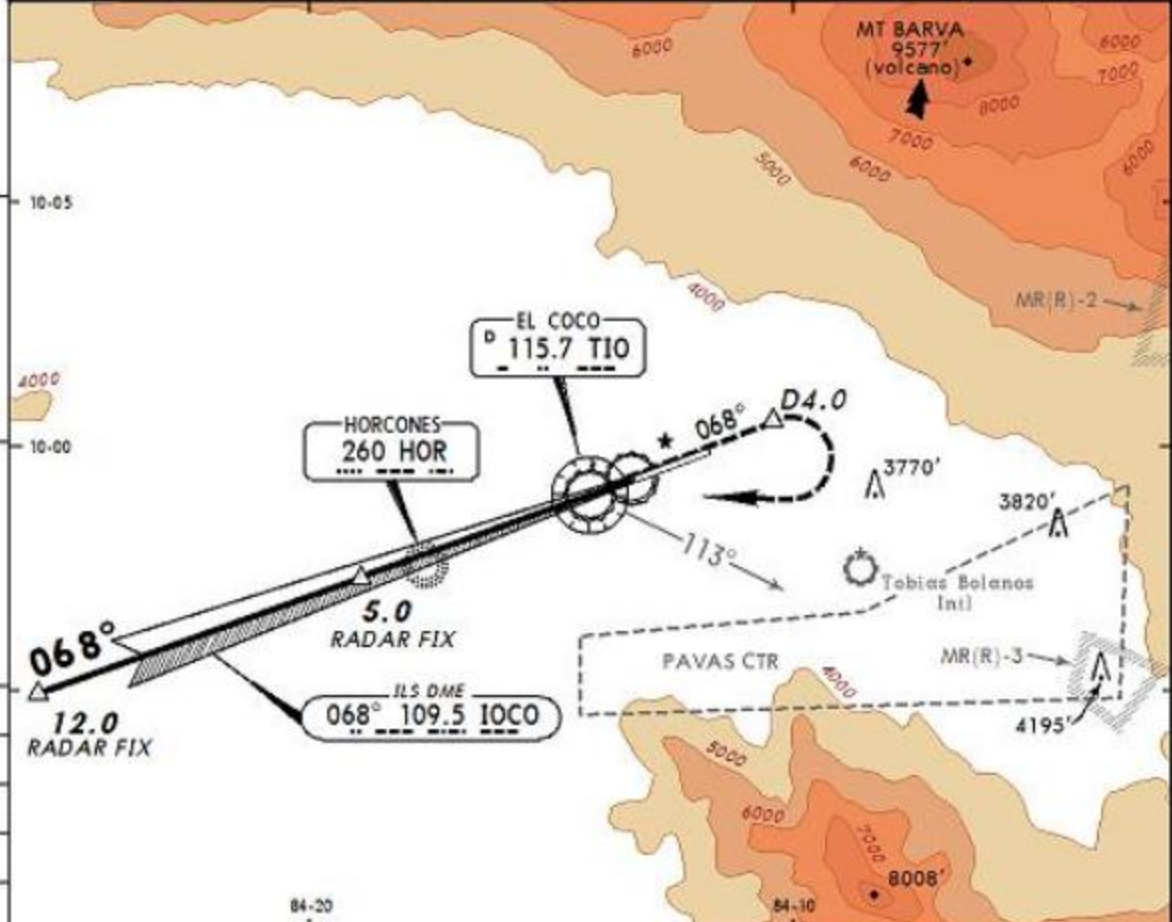
ATIS 127.3	COCO Control (R) 119.6	*COCO Approach (R) 120.5	COCO Tower 118.6	Ground 121.9
---------------	---------------------------	-----------------------------	---------------------	-----------------

RADAR	Final Apch Crs 068°	No FAF	MDA(H) 3400' (438')	Apt Elev 3021' TDZE 2962'
-------	-------------------------------	--------	-------------------------------	------------------------------



MISSED APCH: Climb outbound on TIO VOR R-068 to D4.0 or 5000', then RIGHT turn and continue climbing to the TIO VOR. Do not exceed TIO VOR R-113. Notify CONTROL at 6000' for radar vectors.
Obstacles in the missed approach area require a climb gradient of 250'/NM.

Alt Set: hPa TDZ Elev: 104 hPa Trans level: FL 200 Trans alt: 19000'
1. Do not exceed 200 kts in any phase of the procedure. 2. In case of communications failure, continue to TIO VOR maintaining last assigned altitude.



PAPI MALSR REIL		TIO on 115.7 R-068	D4.0 or 5000'
-----------------	--	---------------------------	----------------------

STRAIGHT-IN LANDING ASR 07
RAIL out CEILING-VISIBILITY | ALS out
MDA(H) **3400' (438')** | **CEILING REQUIRED** | CIRCLE-TO-LAND

A	500'- 1.6 km	A	NA
B		B	
C		C	
D		D	

CHANGES: Ground frequency, airspace.

© JEPPesen SANDERSON, INC., 1999, 2005. ALL RIGHTS RESERVED.