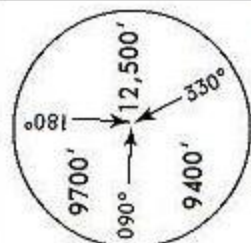


ATIS  
**127.3**

Apt Elev  
**3021'**

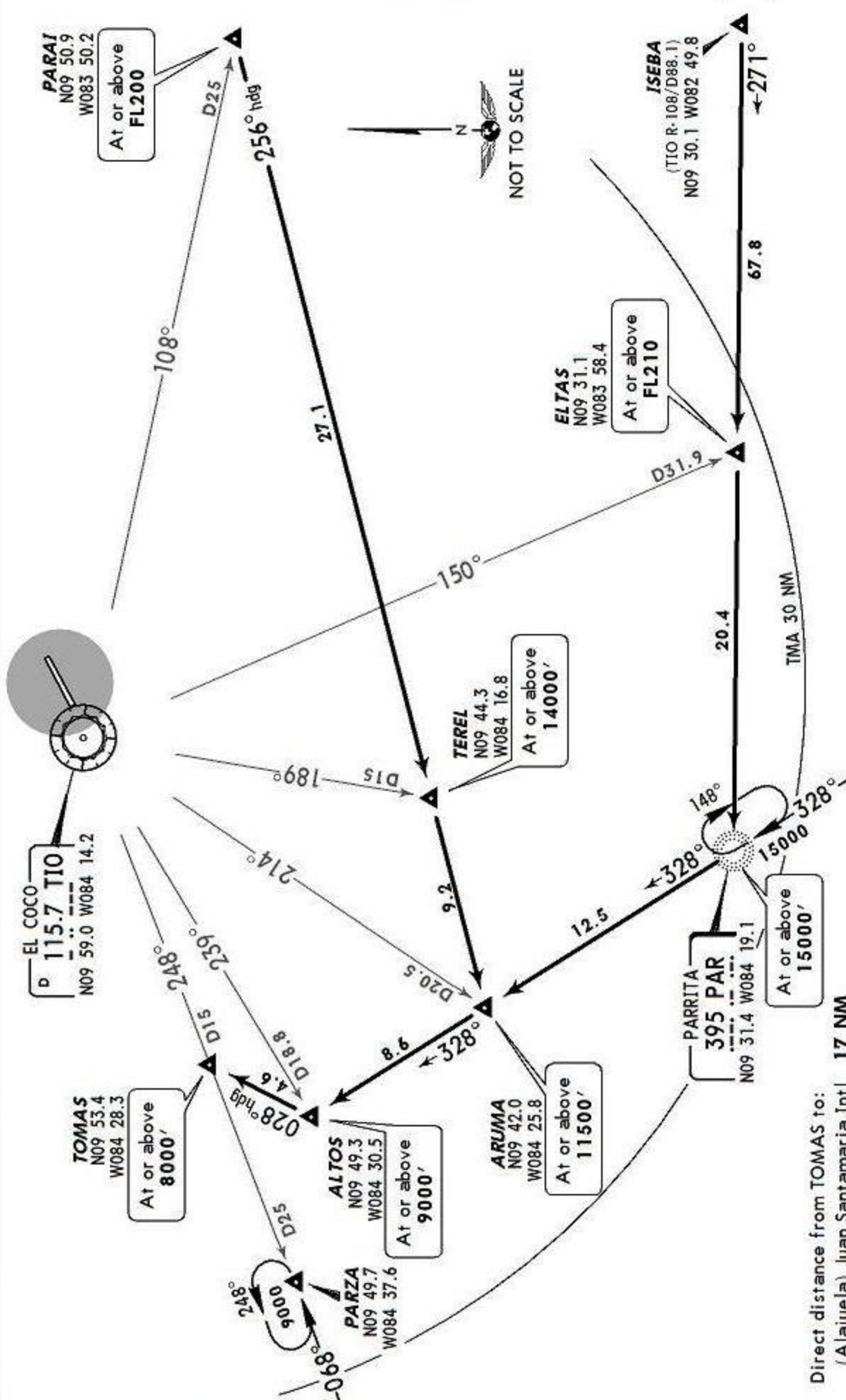
Alt Set: hPa Trans level: FL200 Trans alt: 19000'  
1. Cross waypoints at or above the altitude indicated on the diagram.  
2. Holding at PARZA available only at 9000'.



MSA TIO VOR

**PARRITA 2 ARRIVAL**

**SPEED:** MAX IAS unless otherwise indicated or authorized by ATC.  
200 KT at or below 3000' AGL within 10 NM of any airport  
250 KT at or below 10000' MSL within Costa Rican airspace.  
250 KT at or below 10000' AGL within 30 NM of any airport.



ROUTING	
FROM ISEBA	Proceed on 271° bearing to PAR, then turn RIGHT on 328° bearing to ALTOS.
FROM PAR	Proceed on 328° bearing to ARUMA, MAINTAIN 328° bearing to ALTOS.
FROM PARAI	Proceed on 256° heading to ARUMA, then turn RIGHT on 328° bearing to ALTOS.
LANDING	
	Turn RIGHT on 028° heading to TOMAS. EXPECT approach authorization before ALTOS.

Direct distance from TOMAS to:  
(Alajuela) Juan Santamaria Int'l 17 NM