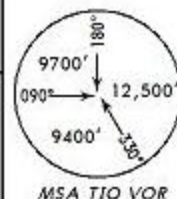


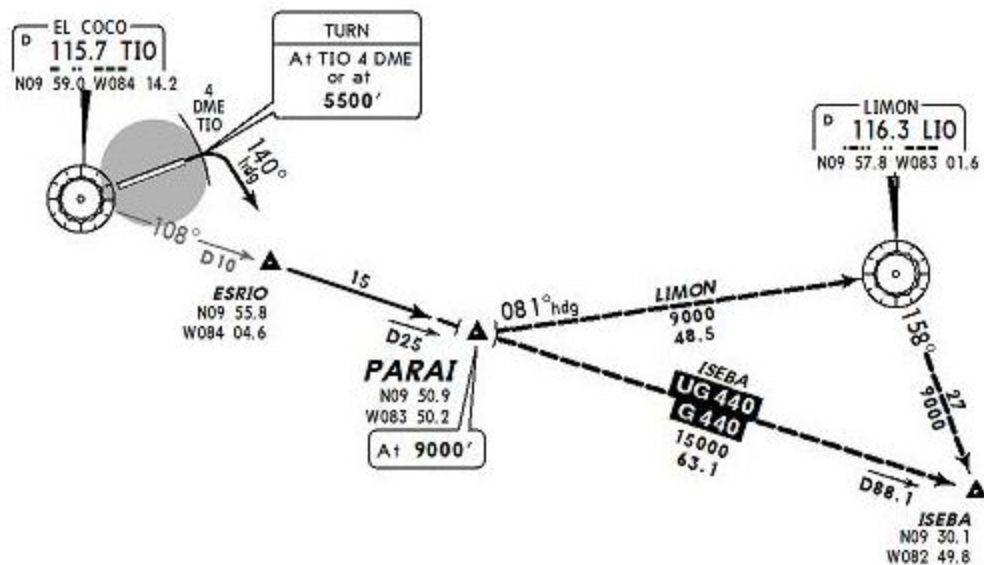
+COCO
Departure (R)
120.5

Apt Elev
3021'

Trans level: FL200 Trans alt: 19000'



PARAI 2 DEPARTURE
(RWY 07)



Direct Distance from
(Alajuela) Juan Santamaria Intl to:
TIO 2 NM

This SID requires a minimum climb
gradient of 300' per NM.

Gnd speed-KT	75	100	150	200	250	300
300' per NM	375	500	750	1000	1250	1500



INITIAL CLIMB

MAINTAIN runway heading with the maximum climb gradient possible to TIO 4 DME or 5500', then climbing RIGHT turn on 140° heading to intercept TIO R-108, continue with departure procedure.

ROUTING

Continue on TIO R-108 to PARAI, continue on the assigned transition.

TRANSITIONS

ISEBA	Climb and MAINTAIN 15000' , over PARAI continue on assigned airway and EXPECT higher.
LIMON	Climb and MAINTAIN 9000' , over PARAI turn LEFT to heading 081° to LIO. Over LIO turn RIGHT LIO R-158 to ISEBA. EXPECT higher over PARAI.