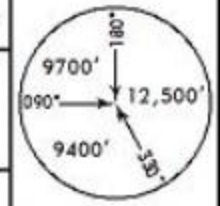


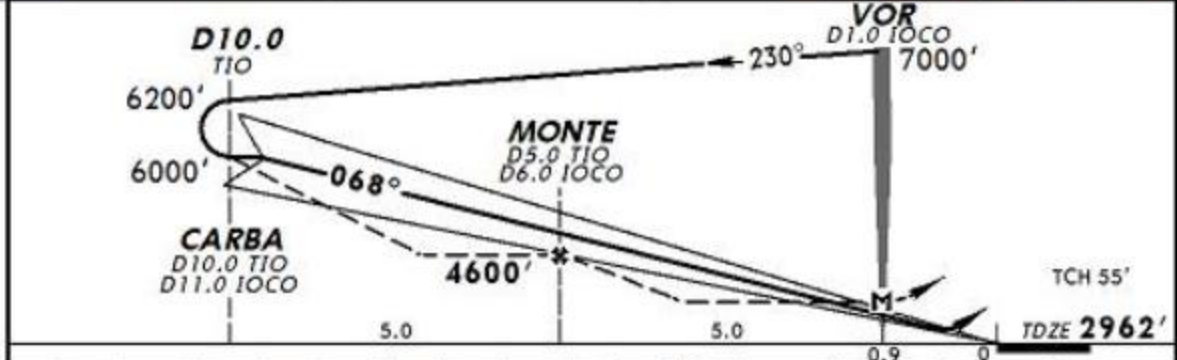
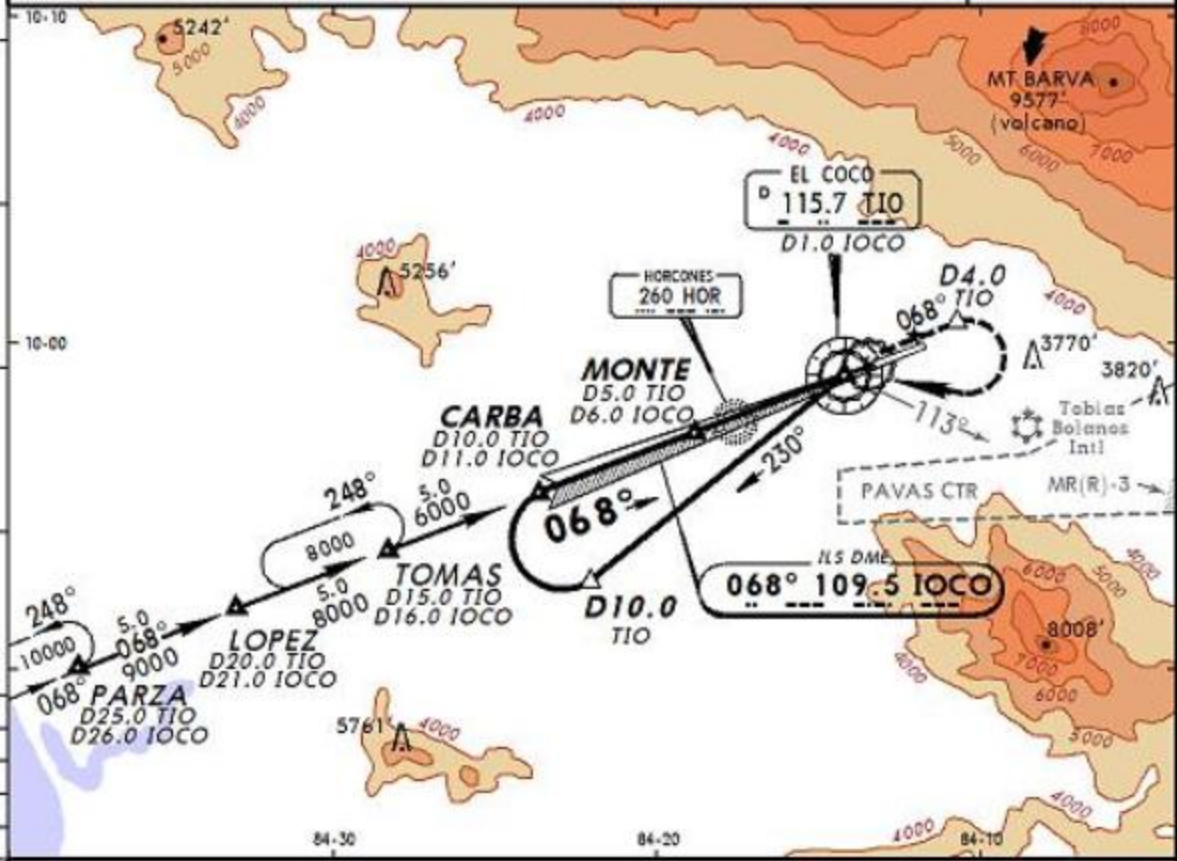
ATIS 127.3	COCO Control (R) 119.6	*COCO Approach (R) 120.5	COCO Tower 118.6	Ground 121.9
---------------	---------------------------	-----------------------------	---------------------	-----------------

LOC IOCO 109.5	Final Apth Crs 068°	Minimum Alt MONTE 4600' (1638')	ILS DA(H) 3162' (200')	Apt Elev 3021' TDZE 2962'
----------------------	---------------------------	---------------------------------------	------------------------------	------------------------------



**MISSED APCH:** Climb outbound on TIO VOR R-068 to D4.0 TIO or 5000'. Then turn RIGHT, continue climbing to TIO VOR crossing at 7000'. Continue per ATC instructions. Do not exceed TIO VOR R-113. Obstacles in the missed approach area require a climb gradient of 300'/NM.

Alt Set: hPa TDZ Elev: 104 hPa Trans level: FL200 Trans alt: 19000'  
 1. Do not exceed 200 kts in any phase of the procedure. 2. Do not enter PAVAS CTR.  
 High density general aviation traffic. 3. At CARBA Int contact tower.



Gnd speed-Kts	70	90	100	120	140	160
GS	3.00°	377	484	538	646	861
FAF to MAP	5.0	4:17	3:20	3:00	2:30	2:09

PAPI	TIO	D4.0
MALSR	on 115.7	TIO
REL	R-068	5000'

STRAIGHT-IN LANDING RWY 07		CEILING REQUIRED		CIRCLE-TO-LAND	
ILS DA(H) 3162' (200')		LOC (GS out) MDA(H) 3360' (398')		Use the BELEN Visual with these values:	
FULL	RAIL or ALS out	RAIL out	ALS out	MDA/H	CEIL-VIS
A				100	3820' (799') 800' - 1.6 km
B	200' - 0.8 km	200' - 1.2 km	400' - 1.6 km	135	3820' (799') 800' - 2.0 km
C				180	3820' (799') 800' - 3.6 km
D			400' - 2.0 km	205	3820' (799') 800' - 4.0 km