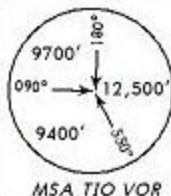


ATIS
127.3

Apt Elev
3021'

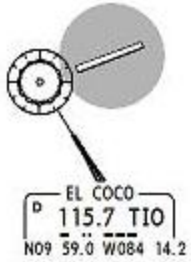
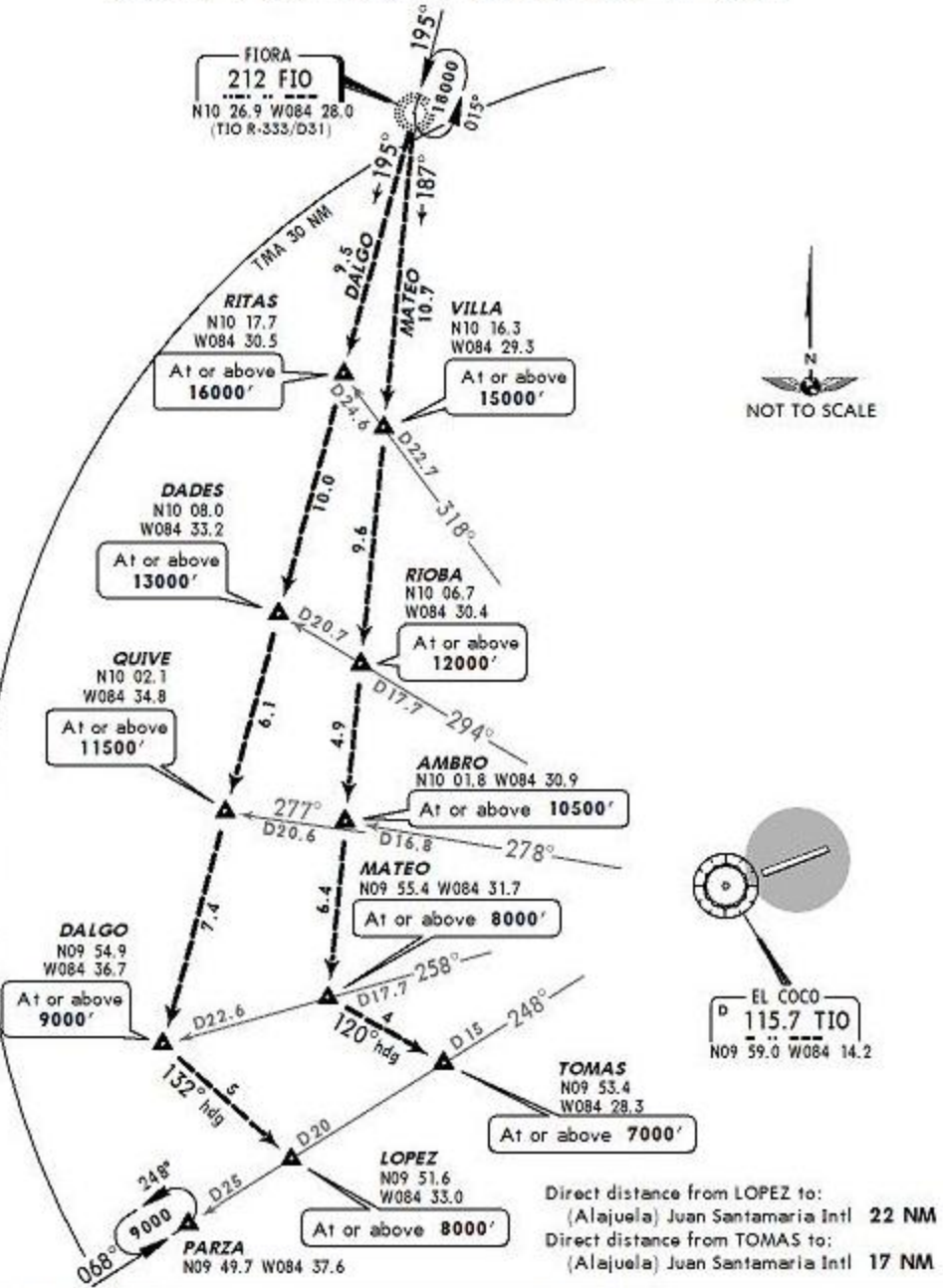
Alt Set: hPa Trans level: FL200 Trans alt: 19000'
1. Cross waypoints at or above the altitude indicated on the diagram.
2. Holding at PARZA available only at 9000'.



FIORA 2 ARRIVAL

SPEED: MAX IAS unless otherwise indicated or authorized by ATC.
200 KT at or below 3000' AGL within 10 NM of any airport.
250 KT at or below 10000' MSL within Costa Rican airspace.
250 KT at or below 10000' AGL within 30 NM of any airport.

FIORA
212 FIO
N10 26.9 W084 28.0
(TIO R-333/D31)



Direct distance from LOPEZ to:
(Alajuela) Juan Santamaria Intl 22 NM
Direct distance from TOMAS to:
(Alajuela) Juan Santamaria Intl 17 NM

TRANSITION	ROUTING
DALGO	From FIO, proceed on 195° bearing to DALGO, then turn LEFT to 132° heading to LOPEZ. EXPECT approach authorization before crossing DALGO.
MATEO	From FIO, proceed on 187° bearing to MATEO, then turn LEFT to 120° heading to TOMAS. EXPECT approach authorization before crossing MATEO.