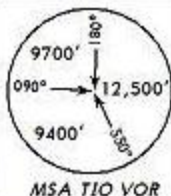


ATIS
127.3

Apt Elev
3021'

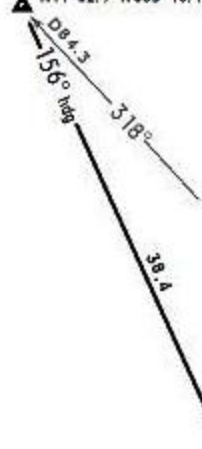
Alt Set: hPa Trans level: FL200 Trans alt: 19000'



EPPSY ARRIVAL

SPEED: MAX IAS unless otherwise indicated or authorized by ATC.
200 KT at or below 3000' AGL within 10 NM of any airport.
250 KT at or below 10000' MSL within Costa Rican airspace.
250 KT at or below 10000' AGL within 30 NM of any airport.

ULAPO
N11 02.9 W085 10.4



RODRI
N10 27.9
W084 54.3
A1 or above
FL200

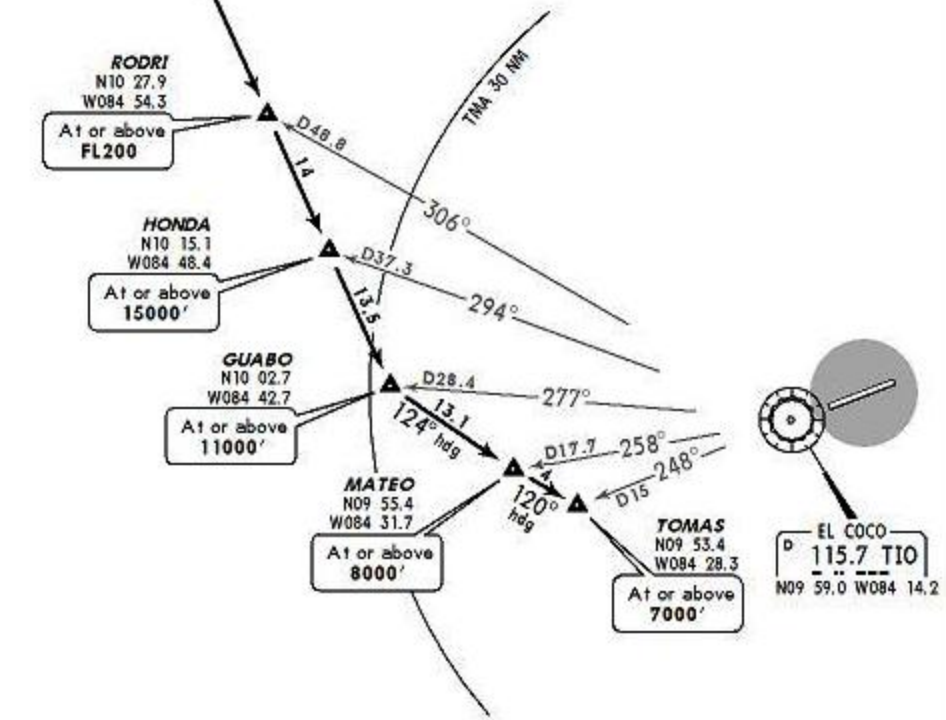
HONDA
N10 15.1
W084 48.4
A1 or above
15000'

GUABO
N10 02.7
W084 42.7
A1 or above
11000'

MATEO
N09 55.4
W084 31.7
A1 or above
8000'

TOMAS
N09 53.4
W084 28.3
A1 or above
7000'

EL COCO
D 115.7 TIO
N09 59.0 W084 14.2



Direct distance from TOMAS to:
(Alajuela) Juan Santamaria Intl 17 NM

ROUTING

From ULAPO, proceed on 156° heading to GUABO, then turn LEFT to 124° heading to MATEO, from MATEO continue on 120° heading to TOMAS. EXPECT approach authorization before GUABO.