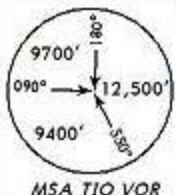


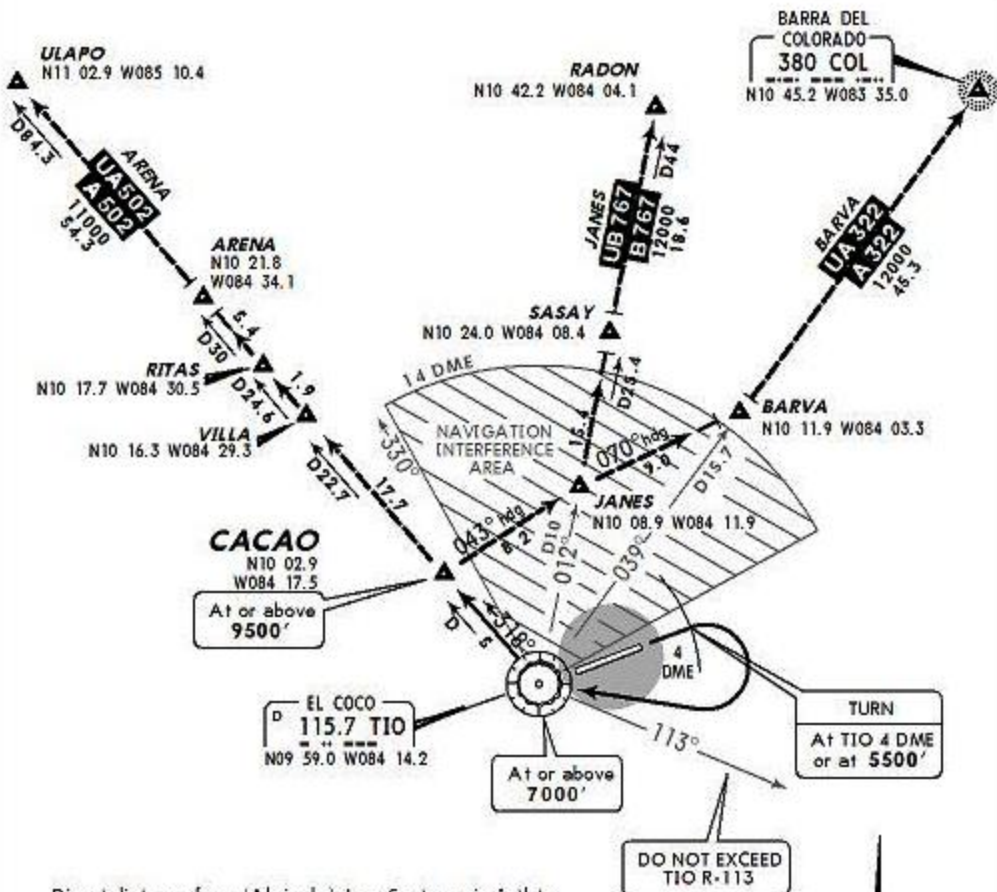
*COCO
Departure (R)
120.5

Apt Elev
3021'

Trans level: FL200 Trans alt: 19000'



CACAO 2 DEPARTURE
(RWY 07)



Direct distance from (Alajuela) Juan Santamaria Intl to:
TIO 2 NM

This SID requires a minimum climb gradient of
500' per NM.

Gnd speed-KT	75	100	150	200	250	300
500' per NM	625	833	1250	1667	2083	2500

INITIAL CLIMB

MAINTAIN runway heading with the maximum climb gradient possible to TIO 4 DME or 5500'; then climbing RIGHT turn to TIO without exceeding TIO R-113. Continue with departure procedure.

ROUTING

Depart TIO on TIO R-318 to CACAO, then continue on ATC assigned transition.

TRANSITIONS

ARENA (A/UA-502)	Climb and MAINTAIN 11000' . Over CACAO continue on airway. EXPECT higher after ARENA.
BARVA (B/UB-322)	Climb and MAINTAIN 12000' . Over CACAO turn RIGHT heading 043° to JAMES then turn RIGHT heading 070° to BARVA and continue on airway. EXPECT higher after BARVA.
JANES (B/UB-767)	Climb and MAINTAIN 12000' . Over CACAO turn RIGHT heading 043° to JANES and continue on airway. EXPECT higher after JANES.

