

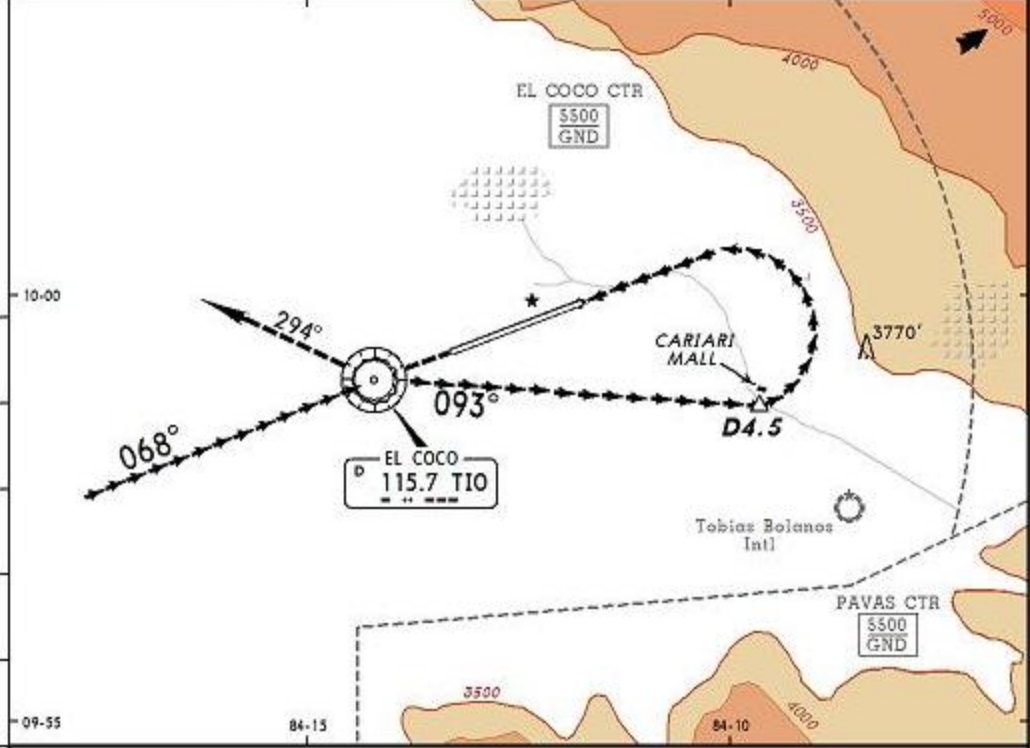
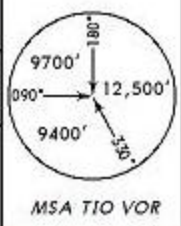
MROC/SJO **JEPPESEN** **SAN JOSE, COSTA RICA**
 (ALAJUELA) JUAN SANTAMARIA INTL (19-1) 2 NOV 07 **BELEN VISUAL Rwy 25**

ATIS	COCO Control (R)	*COCO Approach (R)	COCO Tower	Ground
127.3	119.6	120.5	118.6	121.9

VOR TIO 115.7	Final Apch Crs- Refer to Planview	No FAF	CEIL-VIS 1000' - 5.0 km	Apt Elev 3021'
----------------------------	---	--------	-----------------------------------	-----------------------

MISSED APCH: Climb to 7000' turning LEFT direct to TIO VOR then outbound via TIO VOR R-294 and expect ATC instructions.

Alt Set: hPa Apt Elev: 107 hPa Trans level: FL 200 Trans alt: 19000'
 1. CAUTION: High density arrivals and departures in the Pavas CTR. 2. Because of high density general aviation traffic in the Pavas CTR it is recommended that this procedure be followed as closely as possible. 3. MAX IAS 180 kts.



Lighting - Refer to Airport Chart	7000' LT	→	TIO 115.7	TIO via 115.7 R-294
--	--------------------	---	---------------------	----------------------------------

WEATHER MINIMUMS
 Ceiling **1000'** - VIS **5.0 km**