

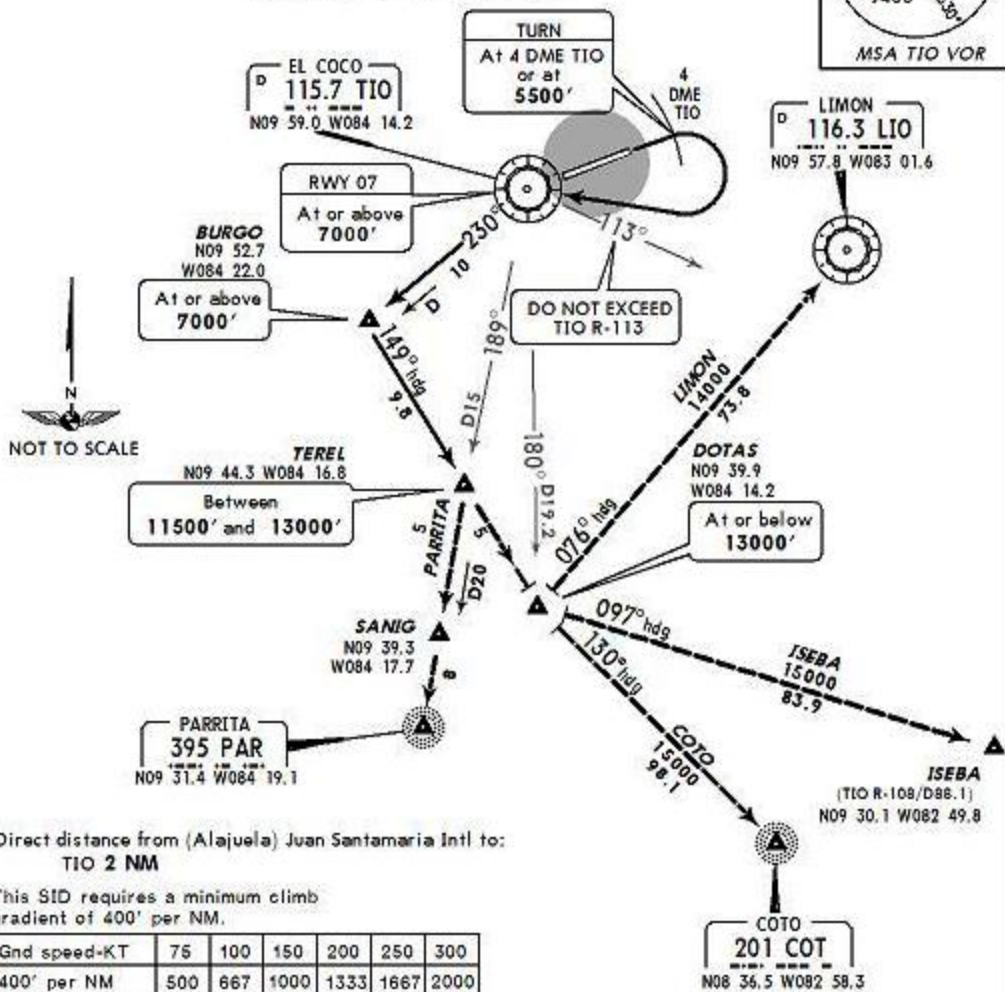
\*COCO  
Departure (R)  
120.5

Apt Elev  
3021'

Trans level: FL200 Trans alt: 19000'



ATENAS 2 DEPARTURE



| RWY                |  | INITIAL CLIMB   |
|--------------------|--|---|
| 07                 |  | MAINTAIN runway heading with the maximum climb gradient possible to TIO 4 DME or 5500', then climbing RIGHT turn to TIO without exceeding TIO R-113. Continue with departure procedure. |
| 25                 |  | Direct to TIO. Continue with departure procedure.   |
|                    |  | ROUTING   |
|                    |  | Climb on TIO R-230 to BURGO, then turn LEFT heading 149° to TEREL and continue on the assigned transition.  |
|                    |  | TRANSITIONS   |
| COTO (A/UA-502)    |  | Climb and MAINTAIN 13000', over TEREL continue on heading 149° to DOTAS, then turn LEFT heading 130° to COT. Over DOTAS climb to 15000'. EXPECT higher after DOTAS.                     |
| ISEBA (G/UG-440)   |  | Climb and MAINTAIN 13000', over TEREL continue on heading 149° to DOTAS, then turn LEFT heading 097° to ISEBA. Over DOTAS climb to 15000'. EXPECT higher after DOTAS.                   |
| LIMON (B/UB-690)   |  | Climb and MAINTAIN 13000', over TEREL continue on heading 149° to DOTAS, then turn LEFT heading 076° to LIO. Over DOTAS climb to 15000'. EXPECT higher after DOTAS.                     |
| PARRITA (B/UB-767) |  | Climb and MAINTAIN 13000', over TEREL turn RIGHT on TIO R-189 to PAR. EXPECT higher after SANIG.  |