

LIBERIA, COSTA RICA

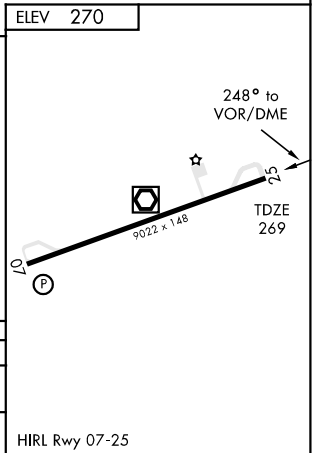
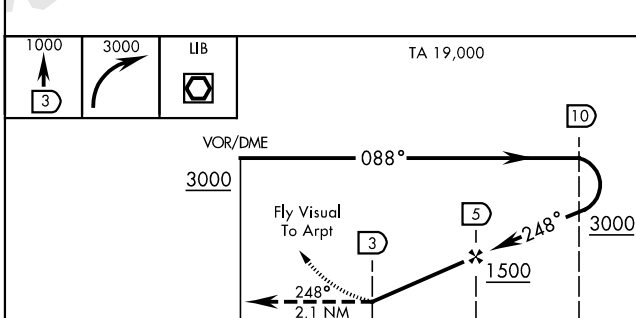
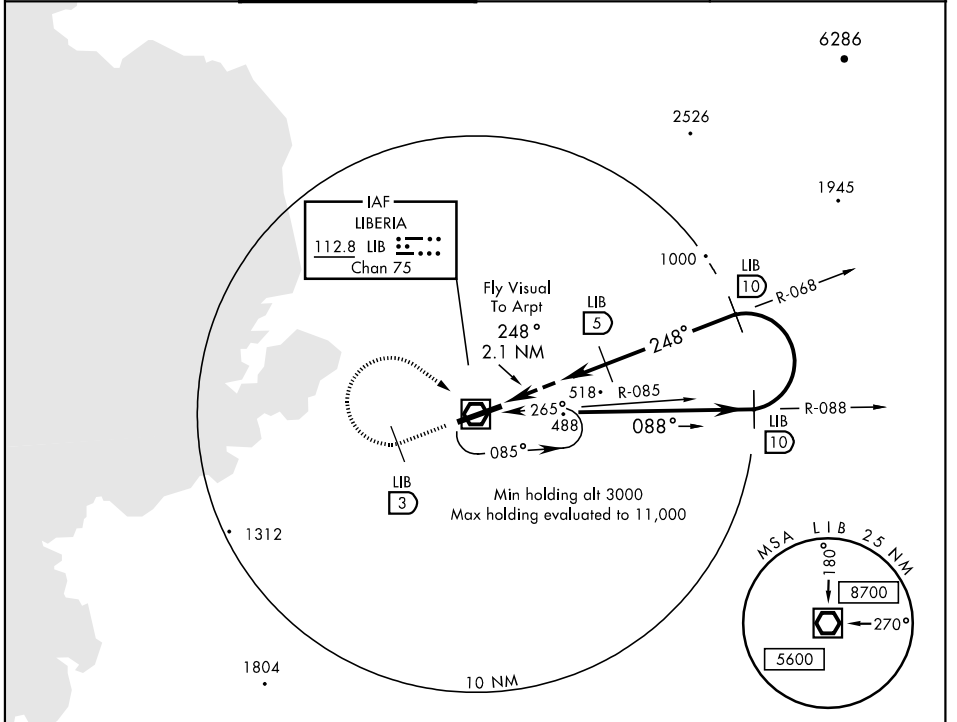
VOR/DME RWY 25

VOR/DME LIB 112.8 Chan 75	APCH CRS 248°	Rwy Idg TDZE 269 Arprt Elev 270
---	-------------------------	--

[USAF] AL-3044 (DGAC) DANIEL ODUBER QUIROS INTL (MRLB)

▽ MISSED APPROACH: Climb on runway heading until 1000 and 3 DME, climbing right turn to LIB VOR/DME to initiate new approach or remain in holding. Cross LIB at 3000 or above.

LIBERIA APP CON 119.8	LIBERIA TOWER 118.8	GND CON 121.7	CLNC DEL 126.8
---------------------------------	-------------------------------	-------------------------	--------------------------



CATEGORY	A	B	C	D
S-25	880-4000m 611 (700-4000m)			
CIRCLING	NOT AUTHORIZED			

HIRL Rwy 07-25

LIBERIA, COSTA RICA
Amdt 1 04050

10°36'N-85°33'W

DANIEL ODUBER QUIROS INTL (MRLB)

VOR/DME RWY 25

Effective 14 APR 2005 - 12 MAY 2005