

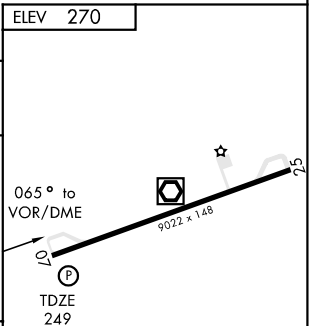
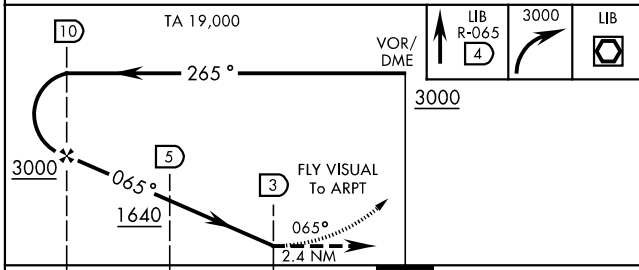
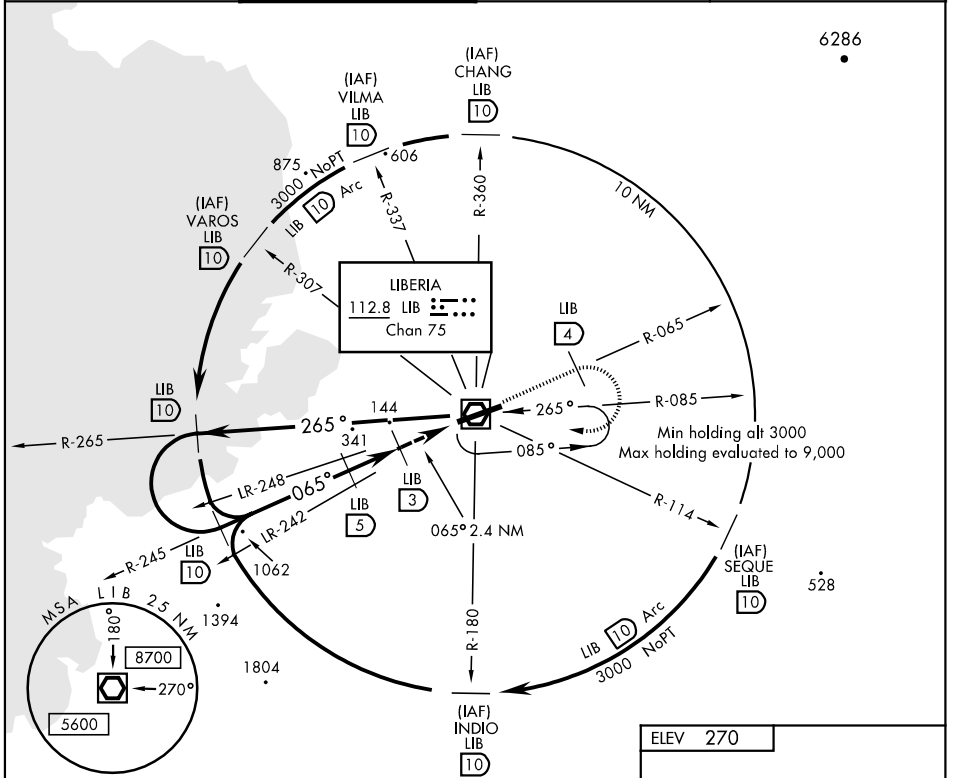
LIBERIA, COSTA RICA

VOR/DME ARC RWY 07

VOR/DME LIB 112.8 Chan 75	APCH CRS 065°	Rwy Idg TDZE Arprt Elev 9022 249 270	[USAF] AL-3044 (DGAC) DANIEL ODUBER QUIROS INTL (MRLB)
---	-------------------------	--	--

▼ MISSED APPROACH: Climb on R-065 until 4 DME then turn right to LIB VOR/DME. Enter holding pattern. Cross LIB at 3000.

LIBERIA APP CON 119.8	LIBERIA TOWER 118.8	GND CON 121.7	CLNC DEL 126.8
---------------------------------	-------------------------------	-------------------------	--------------------------



CATEGORY	A	B	C	D
S-07	1080-4400m 831 (900-4400m)			
CIRCLING	NOT AUTHORIZED			

HIRL Rwy 07-25					
LIB 5 DME to MAP 2.0 NM					
Knots	60	90	120	150	180
Min:Sec	2:00	1:20	1:00	00:48	00:40

LIBERIA, COSTA RICA
Amdt 3 04330

10°36'N-85°33'W

DANIEL ODUBER QUIROS INTL (MRLB)

VOR/DME ARC RWY 07

Effective 14 APR 2005 - 12 MAY 2005