

MRAN
EL TANQUE

JEPPesen
20 JUL 01 **(16-1)**

ARENAL, COSTA RICA
NDB-A

EL TANQUE UNICOM

123.0

NDB
FIO
212

Final
Apch Crs
282°

No FAF

MDA(H)
1500' (1123')

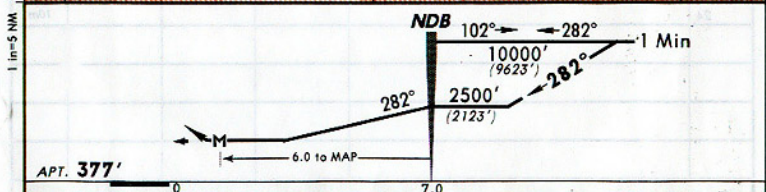
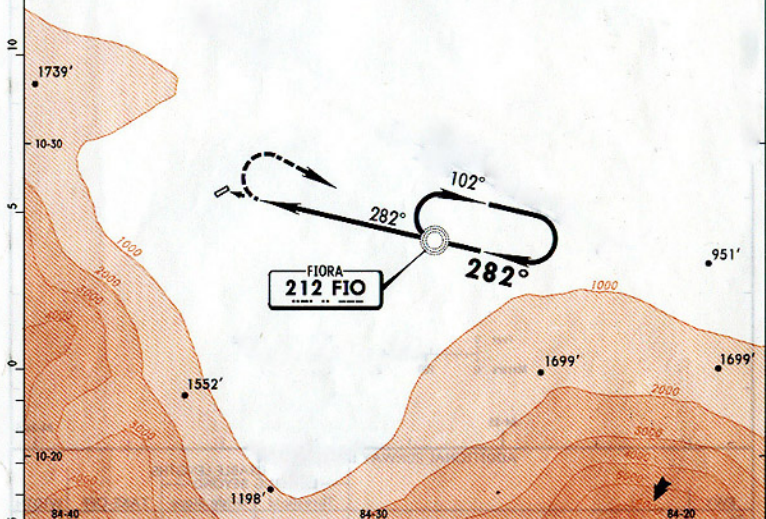
Apt Elev **377'**

No MSA
published

MISSED APCH: Climbing RIGHT turn to 3000' to FIO NDB.

Alt Set: hPa Apt Elev: 14 hPa Trans level: By ATC Trans alt: 19000' (18623')

BRIEFING STRIP™



<i>Gnd speed-Kts</i>	70	90	100	120	140	160
<i>NDB to MAP</i>	6.0	5:09	4:00	3:36	3:00	2:34

3000'
FIO
212
RT

PANS OPS

CIRCLE-TO-LAND

Max Kts.	DAY	NIGHT
	<i>MDA(H)</i>	
A 100	1500' (1123') - 5.0 km	NA
B 135		
C 180		
D 205		

CHANGES: New procedure.

© JEPPesen SANDERSON, INC., 2001. ALL RIGHTS RESERVED.