

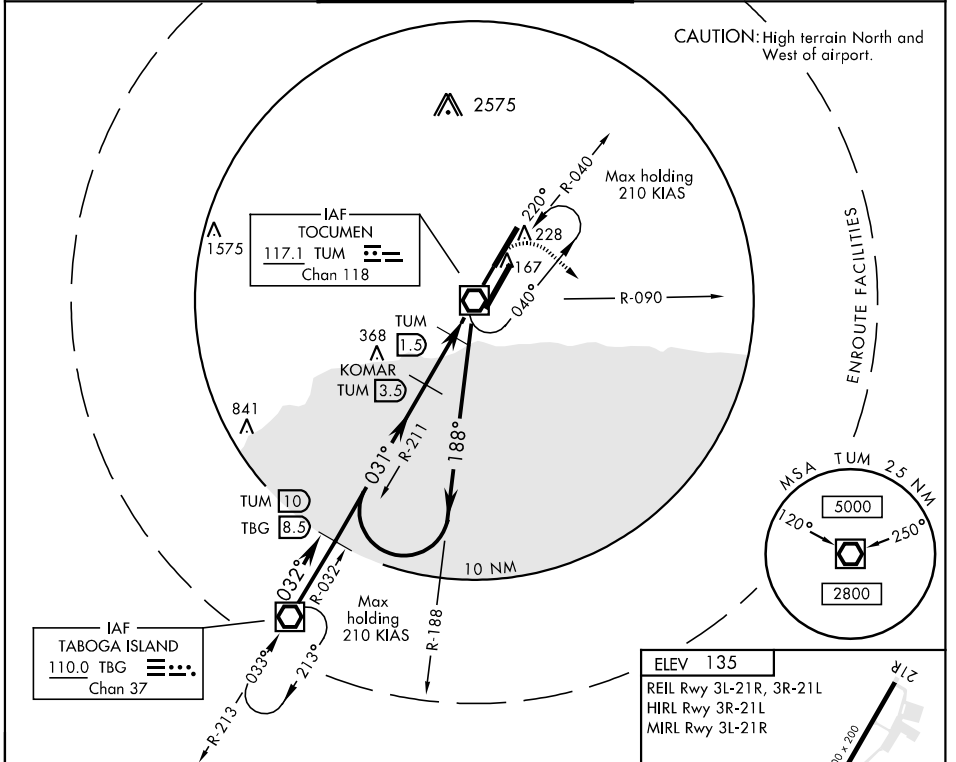
VOR/DME TUM 117.1 Chan 118	APCH CRS 031°	Rwy Idg TDZE 8800 70 Arpt Elev 135
--	-------------------------	--

[USAF] AL-2069 (DAC)

TOCUMEN INTL (MPTO)

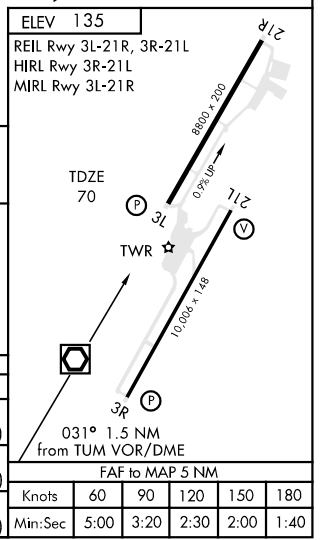
▼ * Circling not authorized NW of Rwy 03L-21R. MISSED APPROACH: Climbing right turn to 3100 out TUM R-090. Then right turn via TUM R-112 to TUM and hold.

PANAMA APP CON 119.7 263.0	TOCUMEN TOWER 118.1	GND CON 121.9
--------------------------------------	-------------------------------	-------------------------



CAUTION: High terrain North and West of airport.

ENROUTE FACILITIES



TBG VOR/DME 3100	TBG (8.5)	TUM (10)	TA 18,000	TUM VOR/DME 3100	3100	TUM (1.5)	TUM (1.5)
032°	032°	031°	188°	031°	R-090	R-031	
8.5 NM	6.5 NM	2.0 NM	1.5 NM	1.5 NM			
CATEGORY	A	B	C	D			
S-03L	420-1200m	350 (300-1200m)		420-1600m 350(300-1600m)			
S-03L No-Light	420-1600m	350 (300-1600m)		420-2000m 350(300-2000m)			
CIRCLING*	540-1600m 405(500-1600m)	600-1600m 465(500-1600m)	600-2400m 465(500-2400m)	760-3200m 625(700-3200m)			