

# TOCUMEN 1 DEPARTURE

[USAF] SHL-2069 (DAC)

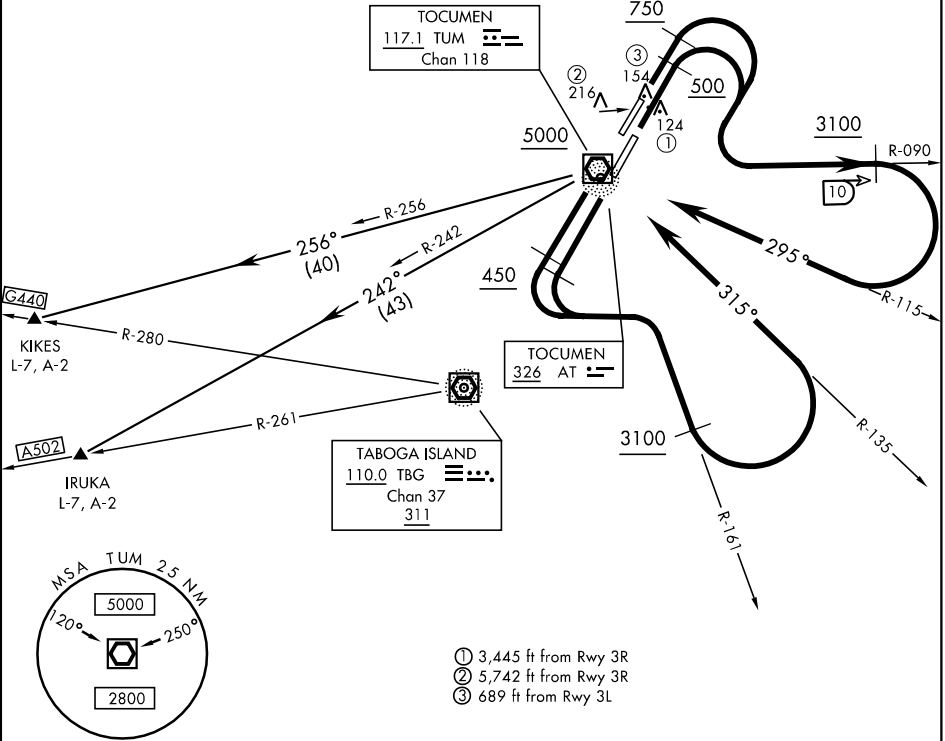
TOCUMEN INTL (MPTO)

PANAMA CITY, PANAMA

GND CON  
121.9  
TOCUMEN TOWER  
118.1  
PANAMA APP CON  
119.7 263.0

Rwy	Knots	60	120	180	240	300	360
3R	V/V(fpm)	230	460	690	920	1150	1380
3L	V/V(fpm)	310	620	930	1240	1550	1860

Minimum Climb Rate to 3100



TA 18,000

## DEPARTURE ROUTE DESCRIPTION

**Rwys 03L/R:** Take-off to the North until reaching turning altitude (Rwy 03L 750, Rwy 03R 500), turn right to intercept TUM R-090 climbing to 3100, at 10 DME, then turn right to intercept TUM R-115 direct to TUM VOR and cross at or above 5000. Thence...

**Rwys 21L/R:** Take-off to the South until reaching 450 turn left to intercept TUM R-161 climbing to 3100, then turn left to intercept TUM R-135 direct to TUM VOR and cross at or above 5000. Thence...

**IRUKA TRANSITION:** Via TUM R-242 to IRUKA INT, intercept airway A-502 climb according to ATC instructions.

**KIKES TRANSITION:** Via TUM R-256 to KIKES INT, intercept airway G-440 climb according to ATC instructions.

# TOCUMEN 1 DEPARTURE

PANAMA CITY, PANAMA  
TOCUMEN INTL (MPTO)

**Effective 14 APR 2005 - 12 MAY 2005**