

# MUBAR 1 DEPARTURE

[USAF] SHL-2069 (DAC)

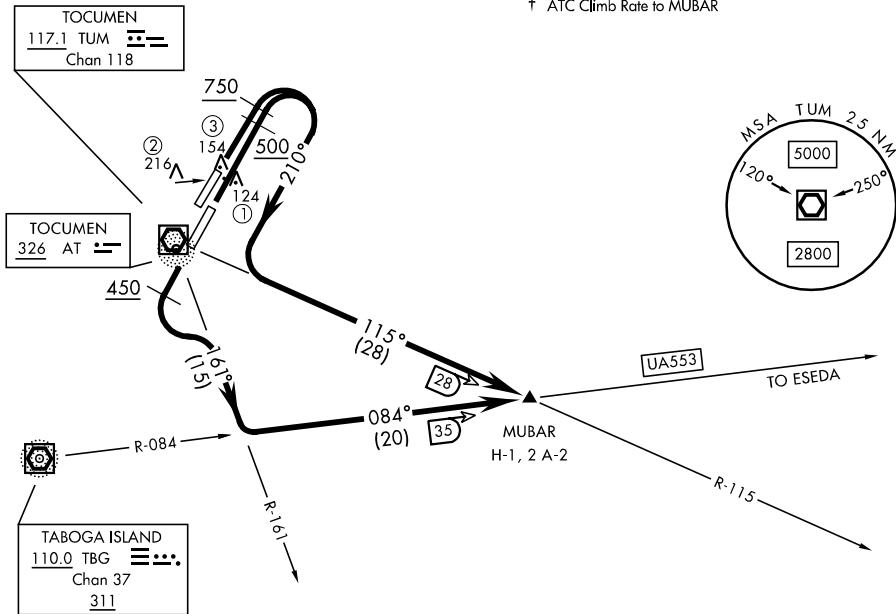
TOCUMEN INTL (MPTO)

PANAMA CITY, PANAMA

GND CON  
121.9  
TOCUMEN TOWER  
118.1  
PANAMA APP CON  
119.7 263.0

Rwy	Knots	60	120	180	240	300	360
*†3Rⓐ	V/V(fpm)	230	460	690	920	1150	1380
*†3Lⓑ	V/V(fpm)	310	620	930	1240	1550	1860

\* Minimum Climb Rate:  
ⓐ To 500 ⓑ To 750  
† ATC Climb Rate to MUBAR



NOTE: The use of this departure is subject to prior approval by ATC.

- ① 3,445 ft from Rwy 3R
- ② 5,742 ft from Rwy 3R
- ③ 689 ft from Rwy 3L

TA 18,000

## DEPARTURE ROUTE DESCRIPTION

**Rwys 03L/R:** Take-off to the North, until reaching turning altitude (Rwy 03L 750', Rwy 03R 500'), turn right climbing on a 210° heading until intercepting TUM R-115 direct to MUBAR INT. Climb on UA-553 according to ATC instructions.

**Rwys 21L/R:** Take-off to the South, upon reaching 450' turn left climbing to intersect TUM R-161. Intercept TBG R-084 direct to MUBAR INT. Climb on UA-553 according to ATC instructions.