

LOC I-NAT <b>110.7</b> Chan 44	APCH CRS <b>029°</b>	Rwy Idg <b>10,006</b> TDZE <b>28</b> Arpt Elev <b>135</b>
--------------------------------------	-------------------------	---

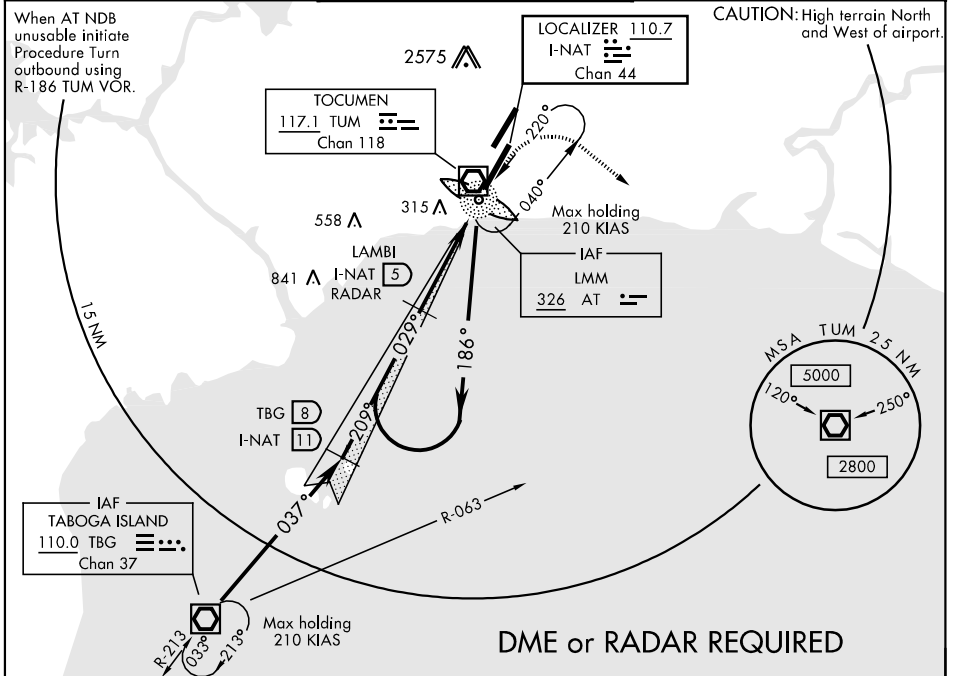
[USAF] AL-2069 (DAC)

TOCUMEN INTL (MPTO)

\* When ALS inop, increase vis to 1200m.  
 \*\*When ALS inop, increase vis to 1600m, CAT E to 2000m.  
 \*\*\*Circling not authorized NW of Rwy 03L-21R.

**MISSED APPROACH:** Climb straight ahead to 500 then right turn hdg 130° to 3100, then via TGB R-063.

PANAMA APP CON <b>119.7 263.0</b>	TOCUMEN TOWER <b>118.1</b>	GND CON <b>121.9</b>
--------------------------------------	-------------------------------	-------------------------



**DME or RADAR REQUIRED**

TBG VOR/DME 3100 037° 2200 029° 1700 029° GS 3.00° TCH 59	TBG 8 I-NAT 11 LMM 3100 186° LAMBI I-NAT 5 / RADAR 1628 029°	TA 18,000 LMM 3100 500 3100 Hdg 130° TBG R-063	ELEV 135 REIL Rwy 3L-21R, 3R-21L HIRL Rwy 3R-21L MIRL Rwy 3L-21R	4.3 NM      0.5 NM							
				8000 x 200 0.9% UP TWR 10,000 x 148 029° 0.5 NM from LMM							
CATEGORY	A	B	C	D	E						
S-ILS 3R*	228-800m		200	(100-800m)							
S-LOC 3R**	360-800m		332 (300-800m)		360-1200m		332 (300-1200m)				
CIRCLING***	540-1600m	600-1600m	600-2400m	760-3200m	1080-4800m	LOC FAF to MAP 4.8 NM					
	405 (500-1600m)	465 (500-1600m)	465 (500-2400m)	625 (700-3200m)	945 (1000-4800m)	Knots	60	90	120	150	180
						Min:Sec	4:48	3:12	2:24	1:55	1:36