

VOR/DME DEPARTURE RWY 09

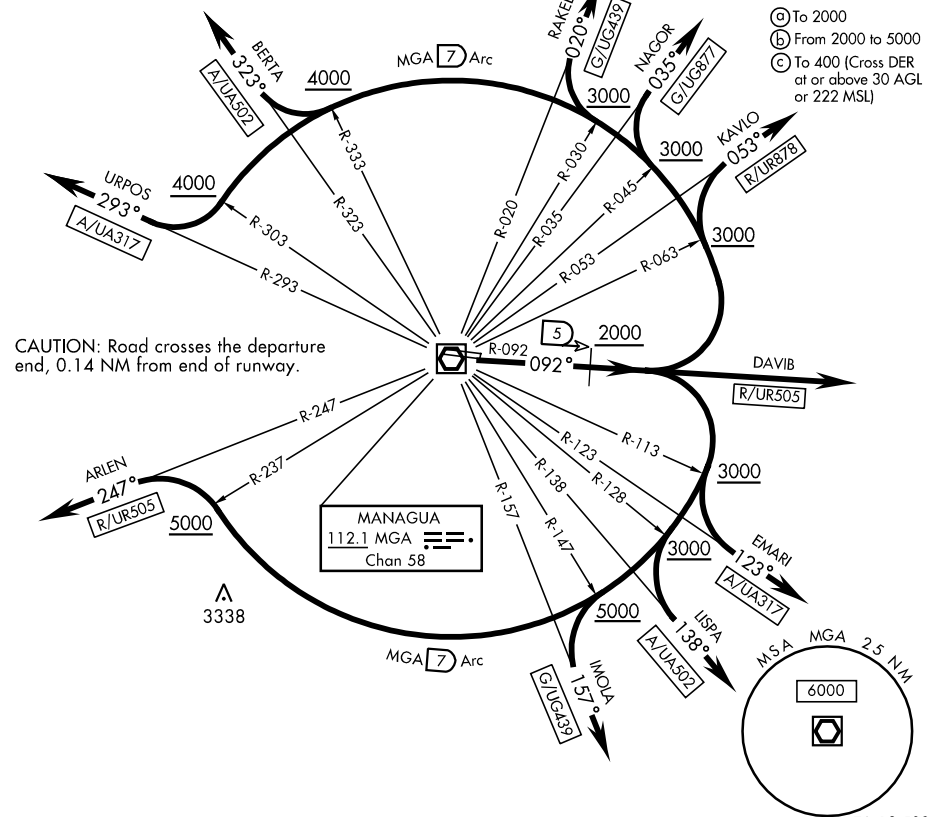
MANAGUA INTL (MNMG)

[USAF]	SHL-1088	(DAC)	MANAGUA, NICARAGUA				
Rwy	Knots		60	120	180	240	300
*09 (A)	V/V(fpm)		460	920	1380	1840	2300
*09 (B)	V/V(fpm)		350	700	1050	1400	1750
†09 (C)	V/V(fpm)		230	460	690	920	1150

GND CON
121.9
MANAGUA TOWER
118.1
MANAGUA APP CON
119.4

* ATC Climb Rate † Minimum Climb Rate

- (A) To 2000
- (B) From 2000 to 5000
- (C) To 400 (Cross DER at or above 30 AGL or 222 MSL)



DEPARTURE ROUTE DESCRIPTION

TAKE-OFF RWY 09: Climb on MGA VOR/DME R-092 to 5 DME at 2000, then turn left or right according to ATC onto the MGA 7 DME Arc until crossing the indicated route radials (R-063, R-045, R-030, R-333, R-303, R-237, R-147, R-128, R-113), then make turns and intercept the departure radials (KAVLO R-053, NAGOR R-035, RAKEL R-020, BERTA R-323, URPOS R-293, ARIEN R-247, IMOLA R-157, LISPA R-138, EMARI R-123, DAVIB R-092). Contact MANAGUA APP CON 119.4. .

VOR/DME DEPARTURE RWY 09

MANAGUA, NICARAGUA
MANAGUA INTL (MNMG)

Effective 14 APR 2005 - 12 MAY 2005