

VOR/DME TNT 112.3 Chan 70	APCH CRS 018°	Rwy ldg TDZE 3294 Arpt Elev 3294
---	-------------------------	--

[USAF] AL-1087 (DGAC)

TONCONTIN INTL (MHTG)

<p>⚠ *Circling not authorized E of Rwy 01-19.</p>	<p>MISSED APPROACH: Climb to 6500 via TNT VOR/DME R-008 remaining within 6.5 NM. Then left turn climbing to 9000 direct TNT VOR/DME. Request ATC instructions.</p>
---	--

<p>ATIS ★ 112.3</p>	<p>TONCONTIN APP CON 126.7</p>	<p>TONCONTIN TOWER 118.7</p>	<p>GND CON 121.9</p>
--------------------------------	---	---	---------------------------------

CIRCLING ONLY PROCEDURE

- 6693
- 7365
- 7513

CAUTION:

1. At missed approach point fly visual to airport.
2. High terrain all quadrants. Do not exceed distance limit in basic procedure or holding.

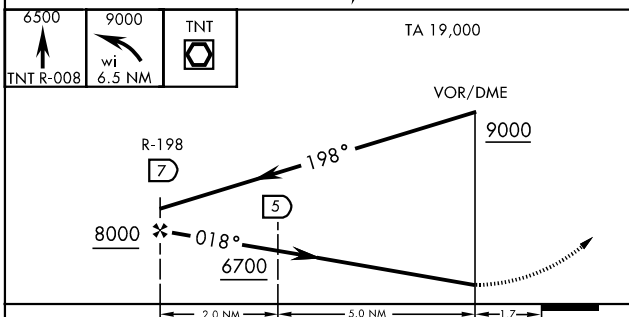
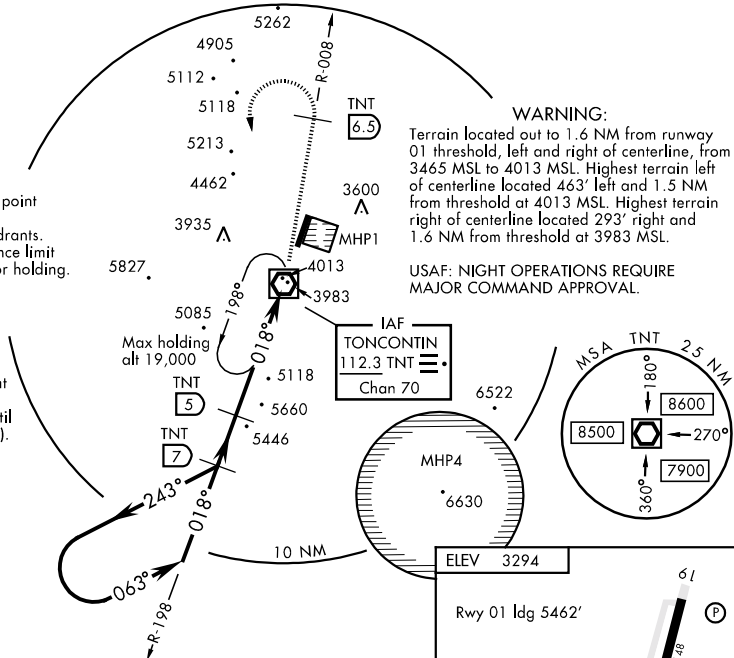
WARNING:

Extreme rate of descent may be required if the runway not sighted until the MAP (1368 ft/NM).

WARNING:

Terrain located out to 1.6 NM from runway 01 threshold, left and right of centerline, from 3465 MSL to 4013 MSL. Highest terrain left of centerline located 463' left and 1.5 NM from threshold at 4013 MSL. Highest terrain right of centerline located 293' right and 1.6 NM from threshold at 3983 MSL.

USAF: NIGHT OPERATIONS REQUIRE MAJOR COMMAND APPROVAL.



Rwy 01 ldg 5462'

PAPI Rwy 01 GS 5.3° Category A and B only.

TDZE 3294

LIRL Rwy 01-19 REIL Rwy 01-19

018° 1.6 NM from VOR/DME

FAF to MAP 7.0 NM					
Knots	60	90	120	150	180
Min:Sec	7:00	4:40	3:30	2:48	2:20

CATEGORY	A	B	C	D
S-01	NOT AUTHORIZED			
CIRCLING *	5620-2	2326 (2400-2)	5620-3	2326 (2400-3)