

ROATAN, HONDURAS

# VOR/DME 2 RWY 06

VOR/DME ROA <b>113.8</b> Chan <b>85</b>	APCH CRS <b>065°</b>	Rwy ldg TDZE Arprt Elev	<b>7149</b> <b>9</b> <b>18</b>
---	-------------------------	-------------------------------	--------------------------------------

[USAF] AL-2488 (DGAC)

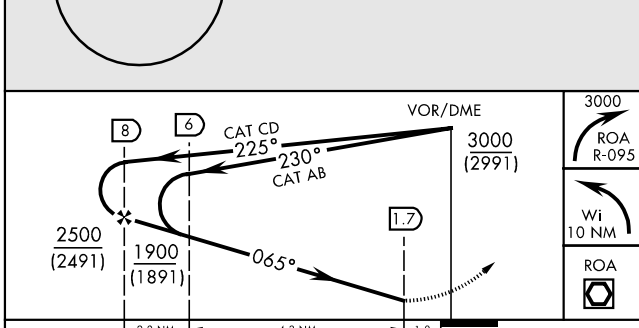
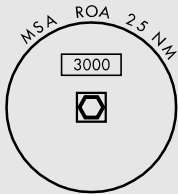
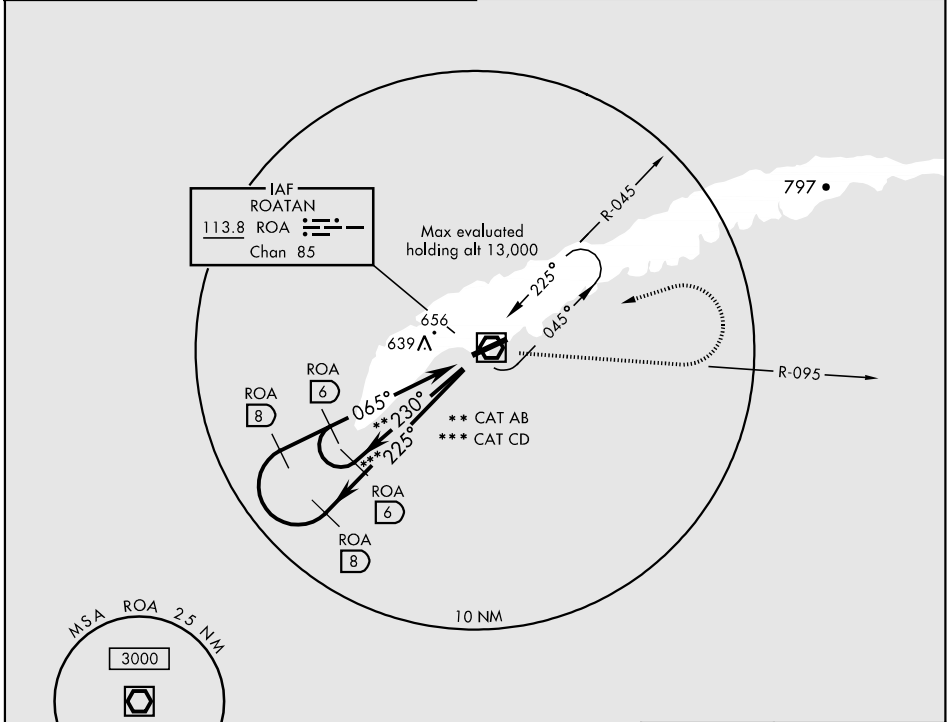
ROATAN INTL (MHRO)

▼ \* When ALS inop, increase vis all CAT ¼ miles.

SALS MISSED APPROACH: Turn right and climb outbound on ROA R-095 to 3000, then turn left within 10 NM to ROA and hold.

ROATAN TOWER  
**118.1**

GND CON  
**121.6**



ELEV	18
Rwy 06 ldg 7149'	
3000 ROA R-095	
Wi 10 NM	
ROA	
7349 x 148	
TDZE 9	
065° 7.3 NM from FAF	

	2.0 NM	4.3 NM	1.0	
CATEGORY	A	B	C	D
S-06 *	1000-1 991 (1000-1)	1000-1¼ 991 (1000-¾)	1000-2¾ 991 (1000-2¾)	
CIRCLING	NOT AUTHORIZED			

HIRL Rwy 06-24

ROATAN, HONDURAS

16° 19' N - 86° 32' W

ROATAN INTL (MHRO)

Amdt 1 04330

# VOR/DME 2 RWY 06

**Effective 14 APR 2005 - 12 MAY 2005**