

GUATEMALA CITY, GUATEMALA

VOR/DME 1 RWY 01

VOR/DME AUR 114.5 Chan 92	APCH CRS 013°	Rwy Idg TDZE Arpt Elev 9800 4884 4952
---	-------------------------	---

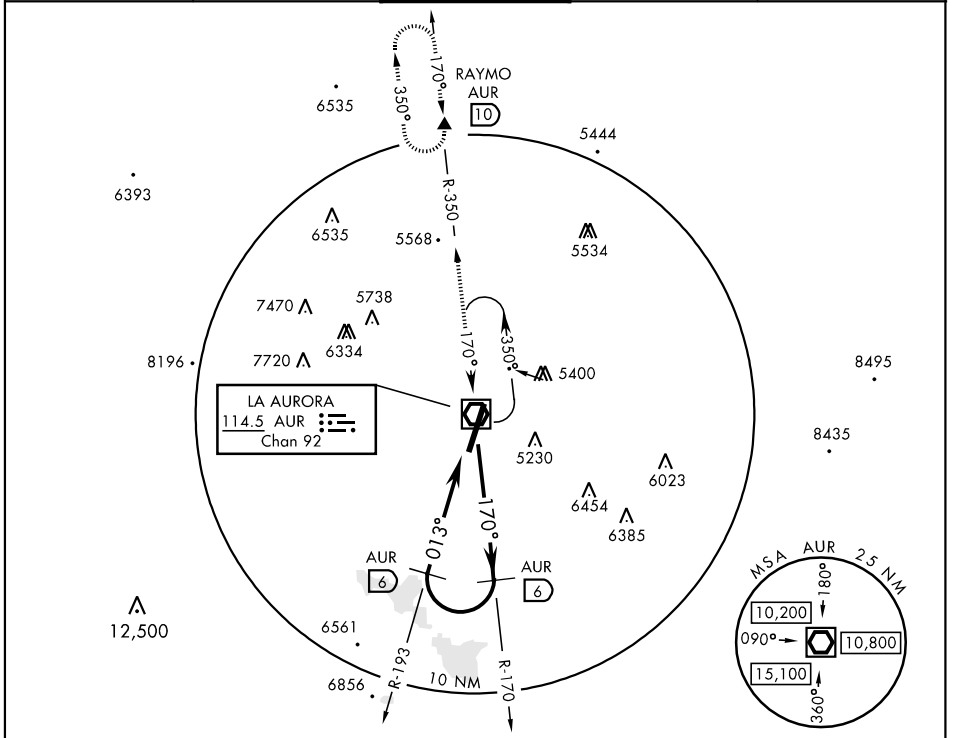
[USA] AL-1085 (DGAC)

LA AURORA (MGGT)

▼ * Circling not authorized E of Rwy 01-19.

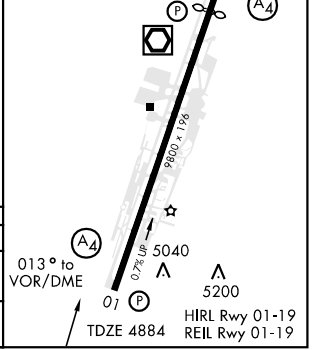
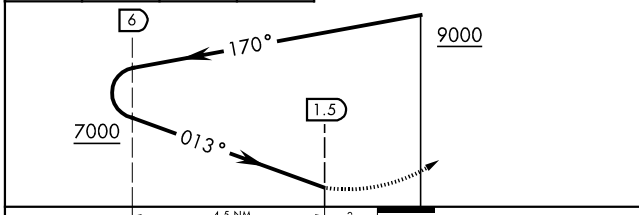
(A4) MAL5 MISSED APPROACH: Climb on course of 013° until reaching AUR VOR, then left turn outbound on AUR R-350 and continue climbing until reaching 10,000 at RAYMO and hold. Request instructions from APP CON.

ATIS 126.5	LA AURORA APP CON 119.3	LA AURORA TOWER 118.1	GND CON 121.9	CLNC DEL 120.7
----------------------	-----------------------------------	---------------------------------	-------------------------	--------------------------



10,000 ↑ CrS 013°	AUR 	AUR R-350 	RAYMO AUR 	TLv FL200 TA 19,000
-------------------------	---------	---------------	---------------	------------------------

ELEV 4952	Rwy 19 Idg 9456'
-----------	------------------



CATEGORY	A	B	C	D
S-01	5460-1600m 576 (600-1600m)		5460-2500m 576(600-2500m)	5680-3600m 776(800-3600m)
CIRCLING *	5460-1600m 508 (600-1600m)		5460-2500m 508(600-2500m)	5680-3600m 776(800-3600m)

GUATEMALA CITY, GUATEMALA
04050

14° 35' N-90° 32' W

LA AURORA (MGGT)

VOR/DME 1 RWY 01

Effective 14 APR 2005 - 12 MAY 2005