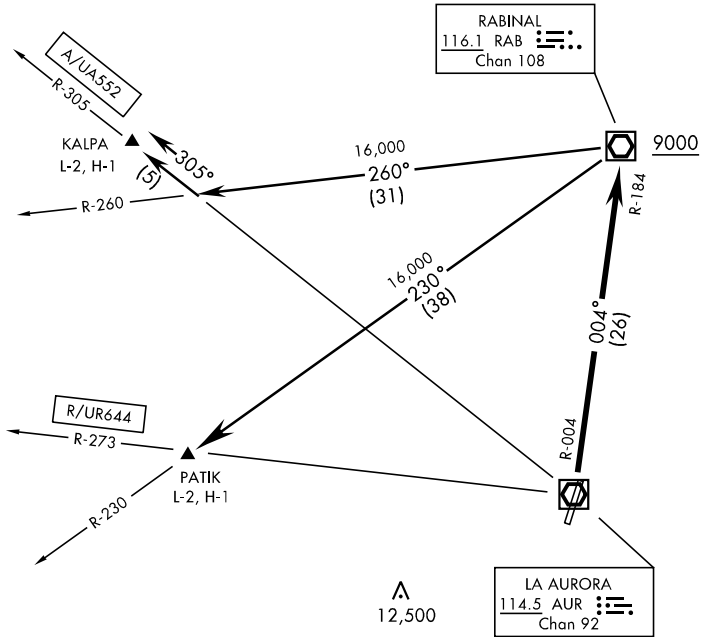


ATIS
126.5
CLINC DEL
120.7
GND CON
121.9
LA AURORA TOWER
118.1
LA AURORA APP CON
119.3



TA 19,000

A
12,500

DEPARTURE ROUTE DESCRIPTION

TAKE-OFF RWY 01: Turn left, climbing on AUR R-004.

KALPA TRANSITION: From over RAB VOR/DME or reaching 9000, whichever occurs first, turn left to intercept A552/UA552, thence . . .

PATIK TRANSITION: From over RAB VOR/DME or reaching 9000, whichever occurs first, turn left to intercept RAB R-230, continue until intercepting R644/UR644, thence . . .

. . . Continue climbing to 16,000 or above, according to ATC instructions.